

# GERDA®

PREMIUM DOOR MANUFACTURER



## APARTMENT DOORS

STAR | PREMIUM | COMFORT | ENJOY

# TABLE OF CONTENTS

# GERDA®

STEP BY STEP TO YOUR NEW DOOR

<b>COMPANY INFORMATION</b>	<b>3</b>
<b>NEW ARRIVALS</b>	<b>4</b>
<b>ELITE PACKAGE (PANEL CONSTRUCTION DOOR)</b>	<b>5</b>
<b>COMFORT AND SAFETY</b>	<b>6</b>
<b>TEDEE POWERED BY GERDA</b>	<b>7</b>
<b>GERDA STAR 60 DOOR</b>	<b>10-13</b>
<b>GERDA PREMIUM 60 DOOR</b>	<b>14-17</b>
<b>GERDA COMFORT 60 DOOR</b>	<b>18-21</b>
<b>GERDA ENJOY DOOR</b>	<b>22-25</b>
<b>PORTALS AND DOOR TRIMS</b>	<b>26</b>
<b>STEEL CLAMPS</b>	<b>29</b>
<b>ACCESSORIES AND FIXTURES</b>	<b>30</b>
<b>DOOR COLOURS</b>	<b>34</b>
<b>DOOR AND FRAME DIMENSIONS</b>	<b>38</b>
<b>INSPIRATIONS</b>	<b>48-50</b>



### PRODUCTS WITH THE BRAND'S QUALITY GUARANTEE



### GERDA®

We have created products that have already become iconic and millions of Poles have welcomed them in their homes. GERDA is associated with safety, reliability and comfort. We do our best to continuously improve our products.

### POLISH MANUFACTURER WITH TRADITION AND EXPERIENCE



### 35 YEARS GERDA®

GERDA is a Polish manufacturer of doors, locks, fittings and sectional garage doors. The company has been appreciated for over 35 years by partners, assemblers and users. We design and create with passion! Our customers receive modern, durable and reliable products. We are worthy of trust!

### PRODUCTS KNOWN ACROSS POLAND

#### DOORS



#### FITTINGS



#### GATES



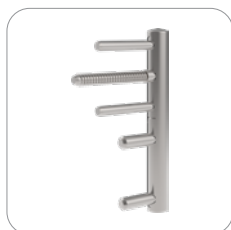
# NEW ARRIVALS

# GERDA®

OUR STANDARD PROVIDES YOU WITH MORE THAN OTHERS

WITH OUR CUSTOMERS IN MIND, THE TEAM OF ENGINEERS AND CONSTRUCTORS IS CONSTANTLY WORKING ON MODIFICATIONS THAT IMPROVE SAFETY AND COMFORT OF USE

## ADJUSTABLE 3D HINGE



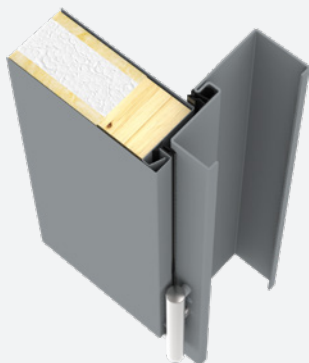
The new hinges with 3-way adjustments are now standard in the COMFORT 60 and PREMIUM 60 lines. This solution provides a very convenient and quick way of adjusting the door, without having to dismantle the leaf from the frame.

## ADJUSTABLE LATCH CATCH OF THE HANDLE



An adjustable latch catch is offered in all the doors from the apartment doors offer. It enables the smooth adjustment of the leaf pressure to the gaskets. Thanks to this solution, adjusting the pressure is always easy (reduce or increase the pressure on the gasket).

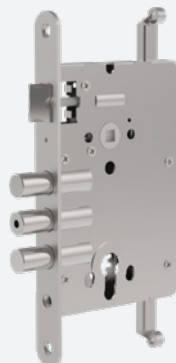
## IMPROVED ACOUSTIC PACK



The use of innovative gaskets in leaves and FRAMES that form one plane provides very good acoustic properties. Noise from the staircase does not penetrate the apartment.



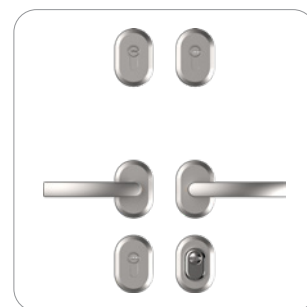
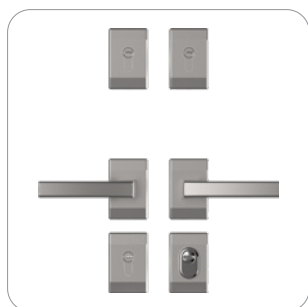
## PREMIUM LOCKS AS STANDARD



All apartment doors have been equipped with PREMIUM locks, in which deadbolts with a safe design have been reinforced by 30%. Additionally, market-unique reinforcement of internal deadbolts made of hardened steel has been applied.



## LARGE SELECTION OF ESCUTCHEONS AND HANDLES



The possibility to customise the appearance of the door thanks to a wide range of oval, oblong and split ESCUTCHEONS in the COMFORT and PREMIUM series.



YOU DECIDE WHAT YOUR DOOR WILL LOOK LIKE

PANEL-TYPE DOORS HAVE A MULTI-LAYER LEAF WITH A STEEL BOX BODY AND REPLACEABLE CLADDINGS ON BOTH SIDES

### PANEL STRUCTURE

Panel doors will be perfect as apartment front doors and their appearance can be customised. The panels are mounted to the steel body making the door sturdier and bracing the leaf. Upon the customer's request, the panels can vary in colour on the inside and the outside. The well-thought-out method of mounting the panels to the body enables easy disassembly and replacement in case of damage or rearrangement, without the need for a costly replacement of the entire door.



**DISMANTLE  
THE EXISTING PANEL**



**CHOOSE A COLOUR  
FROM THE ELITE  
PACKAGE**



**ENJOY THE NEW LOOK  
OF YOUR DOOR**

# COMFORT AND SAFETY



WHAT YOU SHOULD KNOW ABOUT GERDA DOORS



## ANTI-BURGLARY

All our doors are structurally reinforced, with solutions that make it difficult to force them open. They are also equipped with an anti-burglary lock cylinder, which is what GERDA is renowned for. However, for the antiburglary parameters to be confirmed, the door must pass specialised tests and trials for RC2, RC3 and RC4 classes, concluded with the issuance of an appropriate certificate. GERDA doors possess such certificates and approvals. They can be downloaded at any time from [www.gerda.pl](http://www.gerda.pl). The doors offered by GERDA can be bought in class RC2, RC3 and RC4 (detailed explanations at the bottom of the page).



## EXCELLENT ACOUSTIC COMFORT

When buying a door, acoustic comfort must be taken into consideration in order to ensure that as little sound as possible comes into our apartment. The sound reduction index ( $R_w$ ) is expressed in dB (decibels). The higher the value of the index, the better the sound reduction of the door. Our apartment doors have a very good sound reduction index (from 33 to even 47 dB). If there is 80 dB of sound coming from the outside (this corresponds to loud music) it will be reduced from 33-47 dB to even 33 dB, which is the level of a silent conversation.



## FIRE PROTECTION

In our offer of GERDA apartment doors, you can also choose a fire protection pack (available in the PREMIUM 60 series). Fire-resistant doors are designed to stop the spread of fire and smoke. Products with the aforementioned properties are marked with the symbol EI (fire integrity criterion - E and fireproof insulation - I). GERDA offers doors with EI30, EI45 and EI60 parameters which mean the protection lasts for 30, 45 and 60 minutes respectively. The owner of such a door has a guarantee that the flames will not pass through the door for the indicated time and that the door temperature will not cause the fire to spread. The smoke-proofing class is S200.

## ANTI-BURGLARY CLASSES

### RC2 CLASS



PLIERS



WEDGE



HAMMER

### RC3 CLASS



STEEL CROWBAR



WEDGE



HAMMER



MECHANICAL DRILL

### RC4 CLASS



HEAVY HAMMER



AXE



GOUGE



CHISEL



DRILL

TURN YOUR SMARTPHONE INTO A SMART DOOR LOCK



## OPEN DOORS WITH YOUR SMARTPHONE

Open and close doors and monitor door lock status from any place around the world. With the automatic opening feature, you don't need to take your phone out from your purse or pocket. The lock will detect your presence and let you in. The self-locking feature works based on the same principle.

## HIGH-PERFORMANCE BATTERY

Gerda engineers, in collaboration with the South Korean Research Institute, have developed a small dedicated high-performance battery. It powers the mechanism for six months of operation. And when in need of recharging, the lock will let you know as you can charge the battery overnight.

## SAFETY WARRANTY

The lock actuating mechanism is an innovative, patented design developed by Gerda engineers. The software was created by Tedee IoT experts. An intuitive app lets you keep track of who and when has locked or unlocked the door. It also offers a virtual key allocation feature.

## SET

TEDEE LOCK + TEDEE BRIDGE + CLASS 6 LOCK CYLINDERS



### CLASS 6 LOCK CYLINDERS INCLUDED

- ✓ ANTI-BURGLARY TUMBLER LOCK INSERT. NEW LOCK INSERT DESIGN SECURED AGAINST 'LOCK BUMPING', WITH EFFECTIVE DRILL OPENING PROTECTION.



### INSTALL A TEDEE LOCK

- ✓ SLIDE THE LOCK ONTO A GERDA INSERT, ADJUST THE LOCK POSITION AND SECURE IT WITH ONE BOLT. INSTALLATION TAKES NO MORE THAN TWO MINUTES. INSPECT TO SEE WHETHER THE BOLTS SLIDE UPON TURNING THE KNOB.



### INSTALL THE SMARTPHONE APP

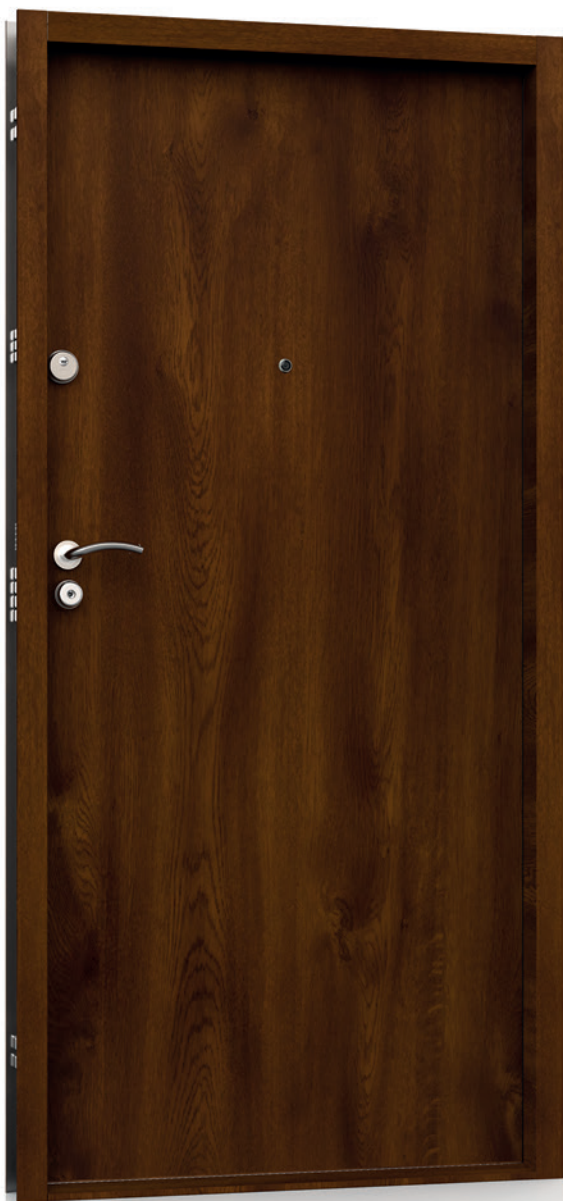
- ✓ DOWNLOAD THE TEDEE APP FROM APPLE STORE OR GOOGLE PLAY. SIGN UP AND ACTIVATE YOUR BLUE-TOOTH, LOCATION SERVICE AND INTERNET ACCESS. ADD YOUR LOCK AND ENTER THE ACTIVATION CODE.



### CONNECT THE BRIDGE

- ✓ FIND A FREE POWER SOCKET NEXT TO THE TEDEE LOCK AND PLUG THE BRIDGE IN. THIS WILL ENABLE YOU TO CONTROL THE LOCK OVER THE INTERNET FROM WHEREVER YOU ARE.





**STAR 60**

**RC** ANTI-BURGLARY PROTECTION CLASS RC4

**mm** LEAF THICKNESS 60 / 70 mm

**dB** SOUND REDUCTION INDEX 43 / 47 dB

**Panel** ELITE PANEL CONSTRUCTION



**PREMIUM 60**

**RC** ANTI-BURGLARY PROTECTION CLASS RC2 / RC3 / RC4

**mm** LEAF THICKNESS 60 / 70 mm

**dB** SOUND REDUCTION INDEX 42 dB

**Fire** FIRE RESISTANCE CLASS EI30 / EI45 / EI60  
AND SMOKE TIGHTNESS CLASS S<sub>200</sub>

**Panel** ELITE PANEL CONSTRUCTION



### COMFORT 60



ANTI-BURGLARY PROTECTION CLASS RC2 / RC3



LEAF THICKNESS 60 mm



SOUND REDUCTION INDEX 30 / 33 dB



### ENJOY



ANTI-BURGLARY PROTECTION CLASS RC1N / RC2








LEAF THICKNESS 46 mm



SOUND REDUCTION INDEX 32 dB



## PARAMETERS

	ANTI-BURGLARY PROTECTION CLASS	<b>RC4</b>
	LEAF THICKNESS / WITH ELITE PACKAGE*	<b>60 / 70* mm</b>
	SOUND REDUCTION INDEX / ELITE PACKAGE*	<b>43 / 47* dB</b>
	LEAF STRUCTURE	<b>POLYURETHANE FOAM FILLING + SOUNDPROOFING PACK + LATTICE</b>
	DOOR SIZES	<b>80N, 80, 90N, 90E, 100E*</b>



EXCELLENT ACOUSTIC COMFORT AND THE HIGHEST LEVEL OF SAFETY



**UNIQUE TUBULAR KEY**

Patented RIM6000 lock cylinder with a tubular key with over 4 billion code combinations.



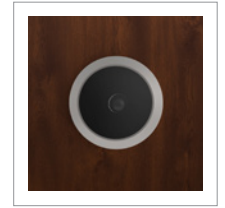
**FILLING**

HCFC-free polyurethane foam with a soundproofing plate providing excellent acoustic performance.



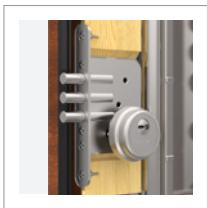
**LATTICE**

A lattice with thickened steel channel bars and hardened rods in the steel body of the door leaf.



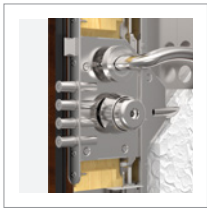
**VIEWER**

Wide-angle viewer as standard with a very good optical performance.



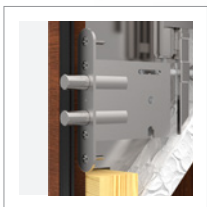
**ADDITIONAL LOCK**

Additional class 6 lock with a class 5 or class 6 lock cylinder.



**MAIN LOCK  
14 LOCKING POINTS**

Unique class 7 main lock with 11 mobile and thickened bolts.



**AUXILIARY LOCKS**

Auxiliary upper and lower locks controlled from the main lock.



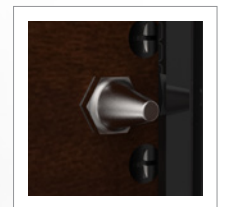
**3 THREE-PIECE HINGES**

Reinforced three-piece hinges with a disassembly lock and elegant caps.



**3 MOVABLE DEADBOLTS**

Reinforced horizontal deadbolts on the hinge sides controlled from the main lock.



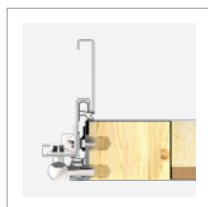
**3 FIXED BOLTS**

Fixed bolts protecting against forcing the door.

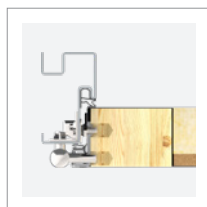
**DOOR FRAMES**



**FA**



**FT**



**FA PORTAL**



**FT PORTAL**



**RIGID CHAIN\***

\* EXTRA CHARGE

EXCELLENT ACOUSTIC COMFORT AND THE HIGHEST LEVEL OF SAFETY

DOOR LEAF DESIGNS  
WITH INOX INSERTS\*



**TML TOKIO 1 INSERT**



**TMM TOKIO 2 INSERT**

<b>SIZE</b>	80N	80	90N	90E	100E*
-------------	-----	----	-----	-----	-------

<b>MODEL</b>	<b>STAR 60</b>
--------------	----------------

**WOOD PLAIN**

**RC4 STANDARD EQUIPMENT**

STAR 60 DOOR LEAF (43 dB)	WIDE-ANGLE VIEWER
DOOR FRAME WITH SEAL	TECHNO HANDLES
3-PIECE HINGES WITH CAPS MATCHING FITTING'S COLOUR	CLASS 6 MAIN LOCK CYLINDER
LAMINATED THRESHOLD WITH SEAL 19 mm / 32 mm	CLASS 5 ADDITIONAL LOCK CYLINDER
FITTINGS SET WITH LOCK CYLINDER PROTECTION	

**EXTRA CHARGES**

SIZE 100E	2.4" ELECTRONIC VIEWER
TWO-COLOUR DOOR	4.3" ELECTRONIC VIEWER
DOOR SHORTENING (20, 30, 40, 50, 60, 70 mm)	INOX THRESHOLD WITH SEAL HEIGHT 19 OR 32 mm
ELITE PACKAGE – PLAIN PANEL ELITE PACKAGE – PATTERN PANEL	NORWEGIAN WOODEN THRESHOLD WITH SEAL 19 mm
SINGLE-SIDE PATTERN TML TOKIO 1 INSERT, TMM TOKIO 2 INSERT	NORWEGIAN WOODEN THRESHOLD WITH ALUMINIUM STRIP AND SEAL HEIGHT 28 mm
DOUBLE-SIDE PATTERN TML TOKIO 1 INSERT, TMM TOKIO 2 INSERT	NORWEGIAN WOODEN THRESHOLD WITH WOODEN STRIP AND SEAL HEIGHT 35 mm <sup>1</sup>
HANDLE-KNOB	RIGID CHAIN (WITHOUT ELITE PACKAGE) <sup>1,2</sup>
ADDITIONAL CLASS 6 LOCK CYLINDER	TEDEE SET

<sup>1</sup> For frames extended by 6 mm, with the DPO mounting system

<sup>2</sup> For frames with the DPO mounting system (frame dowel joint), metal doors

DOOR COLOURS (INCLUDING PANELS, SKIRTING BOARDS AND FRAMES OF THE ELITE PACKAGE\*)

<b>ALPINE WALNUT</b> FRR	<b>BRAZIL WALNUT</b> FRB	<b>LIGHT WALNUT</b> FRP	<b>GOLDEN OAK</b> FDE	<b>WINCHESTER</b> FDW	<b>LIGHT WENGE</b> FEJ
<b>WHITENED WENGE</b> FBJ	<b>WHITE</b> FSB	<b>STEEL GREY</b> FKZ	<b>ANTHRACITE</b> FKG	<b>DARK ANTHRACITE</b> FKF	<b>BLACK</b> FKC

ADDITIONAL COLOURS OF ELITE PACKAGE PANELS\*

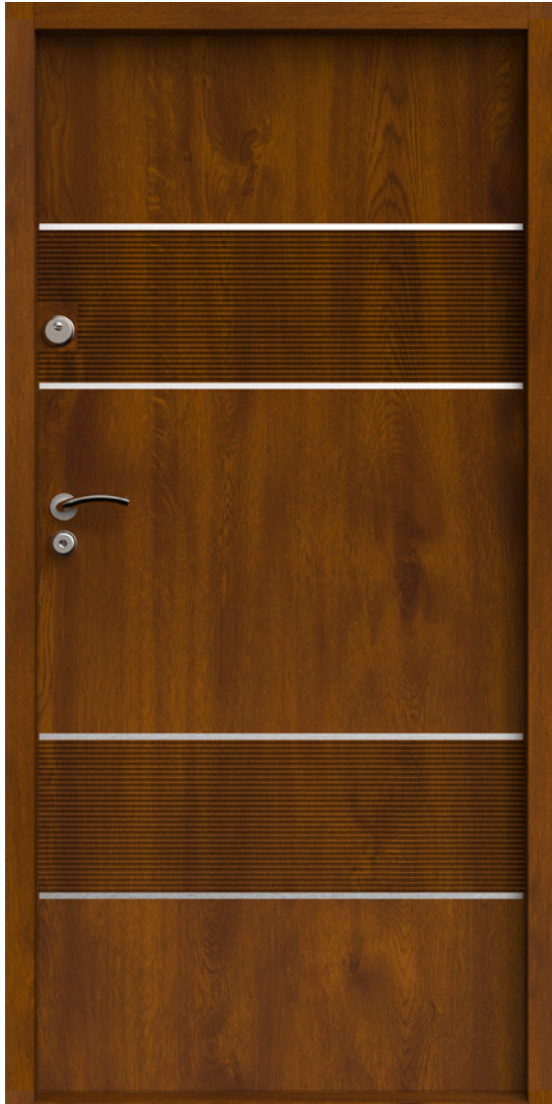
<b>SILICON</b> FKL FLAT DESIGN ONLY	<b>MARBLE</b> FKA FLAT DESIGN ONLY	<b>HEMATITE</b> FDF FLAT DESIGN ONLY	<b>QUARTZ</b> FKH FLAT DESIGN ONLY	<b>WENGE</b> FEE
---	--	--	--	---------------------

ADDITIONAL COLOURS OF SKIRTING BOARDS AND FRAMES OF THE ELITE PACKAGE\*

<b>GREY</b> FKT	<b>DARK BROWN</b> FKX	<b>WENGE</b> FEE
--------------------	--------------------------	---------------------

EXCELLENT ACOUSTIC COMFORT AND THE HIGHEST LEVEL OF SAFETY

DOOR LEAF DESIGNS  
WITH ELITE PACKAGE\*



RHH ELITE package



R00 PLAIN ELITE package



RLF ELITE package



VA3 ELITE package

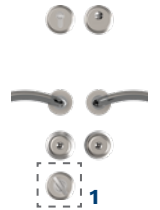


VA4 ELITE package

FITTINGS

RC4

RIM 6000  
TECHNO



DUO-COLOUR  
FITTINGS

SATIN NICKEL



GLOSSY CHROME

1 rigid chain  
(without ELITE package)\*

DOOR FRAMES

FA



FT



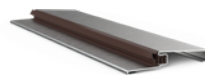
THRESHOLDS

LAMINATED



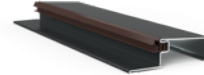
WITH SEAL  
HEIGHT 19 mm

INOX\*



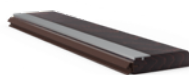
WITH SEAL  
HEIGHT 19 mm

LAMINATED / INOX\*

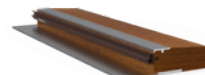


WITH SEAL  
HEIGHT 32 mm

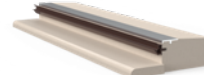
NORWEGIAN WOODEN\*  
(brown, light brown, light)



WITH SEAL  
HEIGHT 19 mm



WITH ALUMINUM STRIP  
AND SEAL, HEIGHT 28 mm










WITH WOODEN STRIP  
AND SEAL, HEIGHT 35 mm





## PARAMETERS

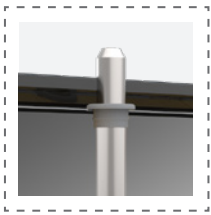
	ANTI-BURGLARY PROTECTION CLASS	<b>RC2 / RC3* / RC4*</b>
	LEAF THICKNESS / WITH ELITE PACKAGE*	<b>60 / 70* mm</b>
	SOUND REDUCTION INDEX	<b>42 dB</b>
	FILLING	<b>SPECIAL SOUNDPROOFING PACKAGE</b>
	FIRE RESISTANCE CLASS (FR)*	<b>EI30<sup>AB</sup> / EI45<sup>B</sup> / EI60<sup>A</sup></b>
	SMOKE TIGHTNESS CLASS	<b>S200 (IN THE EI30<sup>AB</sup> / EI45<sup>B</sup> / EI60<sup>A</sup> DOORS)</b>
	DOOR SIZES	<b>80N, 80, 90N, 90Z, 100E<sup>C*</sup></b>

A. EI30 AND EI60 AVAILABLE IN RC2 AND RC3 CLASS\*  
 B. EI30 AND EI45 AVAILABLE IN RC4 CLASS\*  
 C. SIZE 100E NOT AVAILABLE IN RC4 AND EI60 CLASS\*

RC2 / RC3\* / RC4\*

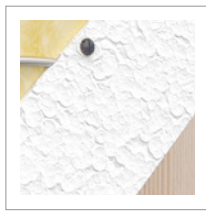
# GERDA® PREMIUM 60

HIGH LEVEL OF SAFETY AND ACOUSTIC COMFORT ALSO IN THE FIRE-RESISTANT VERSION



### VERTICAL DEADBOLT\*

Anti-burglary vertical deadbolt controlled from the main lock. Available in the RC3 pack.



### FILLING

Special filling for good acoustic comfort.



### HARDENED BARS\*

Specially developed design of thickened and hardened steel bar protecting against burglary. Available in RC3 and RC4 class.



### EI30D\* / EI45D\* / EI60D\*

PREMIUM 60 doors are also available with the fire-resistant pack.



### VIEWER

Wide-angle viewer as standard with a very good optical performance.



### ADDITIONAL LOCK

Additional top lock with burglar-proof class 5 or class 6 lock cylinder.



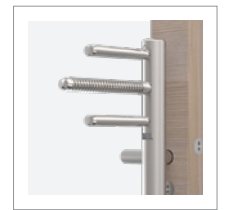
### MAIN LOCK

Class 7 main lock with reinforced deadbolt construction with class 5 or class 6 anti-burglary lock cylinder.



### AUXILIARY LOCKS\*

Lower and upper auxiliary locks with a double deadbolt system controlled from the main lock. Available as a pack RC3 (1 pc) (lower) and RC4 (3 pc).



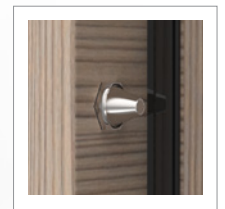
### 3D HINGE WITH CAPS

Hinges adjustable in three planes with caps matching fitting's colour.



### 2 MOVABLE DEADBOLTS\*

Reinforced horizontal deadbolts on the hinge sides controlled from the main lock. Available in RC4 class.



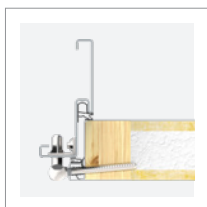
### 2 FIXED BOLTS

Fixed bolts protecting against forcing the door.

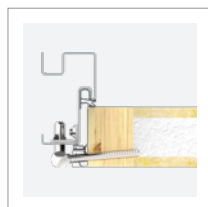
## DOOR FRAMES



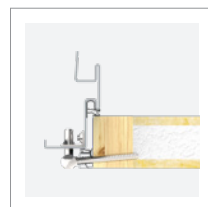
FA



FT



FA PORTAL



FT PORTAL



SINGLE KEY SYSTEM



RIGID CHAIN\*

\* EXTRA CHARGE

DOOR LEAF DESIGNS  
WITH INOX INSERTS\*



**TML TOKIO 1 INSERT**



**TMM TOKIO 2 INSERT**

SIZE	80N	80	90N	90Z	100E*
<b>MODEL</b>	<b>PREMIUM 60</b>				
<b>WOO PLAIN</b>					
<b>RC2 STANDARD ELEMENTS</b>					
PREMIUM 60 DOOR LEAF (42 dB)	FITTINGS SET WITH MAIN LOCK CYLINDER PROTECTION				
DOOR FRAME WITH SEAL	WIDE-ANGLE VIEWER				
ADJUSTABLE 3D HINGES WITH CAPS MATCHING FITTING'S COLOUR	HANDLES: BLOK, BERGEN OR OSLO				
LAMINATED THRESHOLD WITH SEAL 19 mm OR 32 mm	CLASS 5 LOCK CYLINDERS IN SINGLE KEY SYSTEM				
<b>EXTRA CHARGES</b>					
RC3 PACKAGE	CLASS 6 CYLINDERS IN SINGLE KEY SYSTEM (STANDARD IN RC4 PACKAGE)				
RC4 PACKAGE	INOX THRESHOLD WITH SEAL HEIGHT 19 OR 32 mm				
FIRE PROTECTION PACKAGE WITH INTEGRATED CLOSER	NORWEGIAN WOODEN THRESHOLD WITH SEAL HEIGHT 19 mm				
EI30	NORWEGIAN WOODEN THRESHOLD WITH ALUMINIUM STRIP AND SEAL HEIGHT 28 mm				
EI45	NORWEGIAN WOODEN THRESHOLD WITH WOODEN STRIP AND SEAL HEIGHT 35 mm <sup>1</sup>				
EI60	SIZE 100E				
2.4" ELECTRONIC VIEWER	RIGID CHAIN (WITHOUT RC4, FR AND ELITE PACKAGE) <sup>1,2</sup>				
4.3" ELECTRONIC VIEWER	HANDLE-KNOB				
TWO-COLOUR DOORS	UPPER ESCUTCHEON PROTECTION (STANDARD IN FIRE PROTECTION PACKAGE)				
DOOR SHORTENING (20, 30, 40 <sup>3</sup> , 50, 60 <sup>3</sup> , 70 mm) <sup>4</sup>	TEDEE SET				
ELITE PACKAGE – FLAT PANEL					
ELITE PACKAGE – PATTERN PANEL					
SINGLE-SIDE PATTERN					
TML TOKIO 1 INSERT, TMM TOKIO 2 INSERT					
DOUBLE-SIDE PATTERN					
TML TOKIO 1 INSERT, TMM TOKIO 2 INSERT					
<b>DOOR HEIGHT RAISED 100 mm</b>					
PREMIUM 60 (RC2, RC3) +EI30					
PREMIUM 60X (RC2, RC3) +EI30					

<sup>1</sup>For frames extended by 6 mm, with the DPO mounting system  
<sup>2</sup>For frames with the DPO mounting system (frame dowel joint), metal door  
<sup>3</sup>Not applicable to fire-resistant doors  
<sup>4</sup>In RC4 package cutting down in the range of 20, 35 mm

DOOR COLOURS (INCLUDING PANELS, SKIRTING BOARDS AND FRAMES OF THE ELITE PACKAGE\*)

<b>ALPINE WALNUT</b>	<b>BRAZIL WALNUT</b>	<b>LIGHT WALNUT</b>	<b>GOLDEN OAK</b>	<b>WINCHESTER</b>	<b>LIGHT WENGE</b>
FRR	FRB	FRP	FDE	FDW	FEJ
<b>WHITENED WENGE</b>	<b>WHITE</b>	<b>STEEL GREY</b>	<b>ANTHRACITE</b>	<b>DARK ANTHRACITE</b>	<b>BLACK</b>
FBJ	FSB	FKZ	FKG	FKF	FKC

ADDITIONAL COLOURS OF ELITE PACKAGE PANELS\*

<b>SILICON</b>	<b>MARBLE</b>	<b>HEMATITE</b>	<b>QUARTZ</b>	<b>WENGE</b>
FKL	FKA	PDF	FKH	FEE
FLAT DESIGN ONLY	FLAT DESIGN ONLY	FLAT DESIGN ONLY	FLAT DESIGN ONLY	

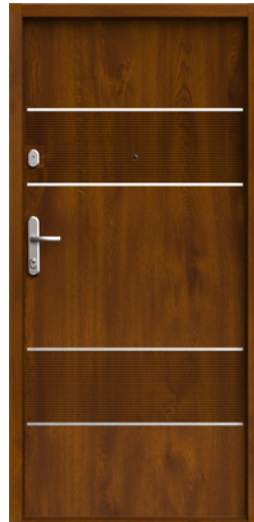
ADDITIONAL COLOURS OF SKIRTING BOARDS AND FRAMES OF THE ELITE PACKAGE\*

<b>GREY</b>	<b>DARK BROWN</b>	<b>WENGE</b>
FKT	FKX	FEE

DOOR LEAF DESIGNS  
WITH ELITE PACKAGE\*



RLF ELITE package



RHH ELITE package



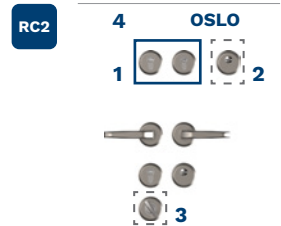
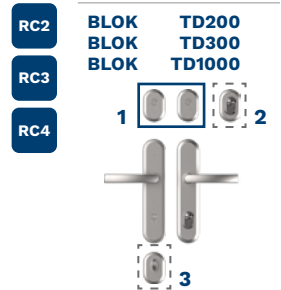
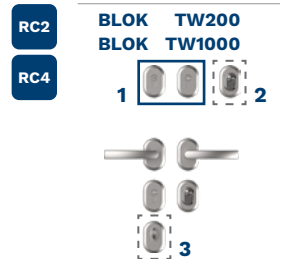
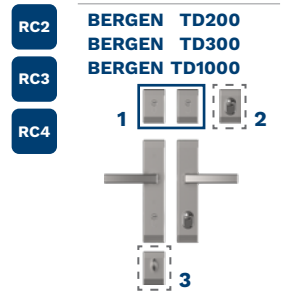
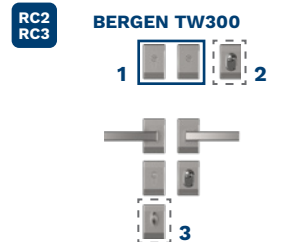
VA3 ELITE package



VA4 ELITE package

- 1 upper escutcheon without lock cylinder protection
- 2 upper escutcheon with lock cylinder protection (FR standard)\*
- 3 rigid chain (without packages RC4, FR, ELITE)\*
- 4 OSLO escutcheon not available for FR package

FITTINGS



FITTINGS COLOUR  
BERGEN, BLOK

**PLATINUM ANODE**



**SILVER ANODE**



**BLACK ANODE**



FITTINGS COLOUR  
OSLO

**SATIN NICKEL**



DOOR FRAMES

**FA**



**FT**



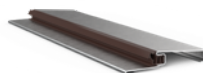
THRESHOLDS

**LAMINATED**



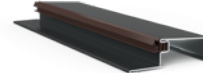
WITH SEAL  
HEIGHT 19 mm

**INOX\***



WITH SEAL  
HEIGHT 19 mm

**LAMINATED / INOX\***

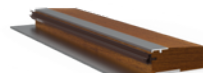


WITH SEAL  
HEIGHT 32 mm

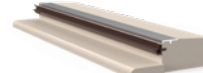
**NORWEGIAN WOODEN\***  
(brown, light brown, light)



WITH SEAL  
HEIGHT 19 mm



WITH ALUMINUM STRIP  
AND SEAL, HEIGHT 28 mm







WITH WOODEN STRIP  
AND SEAL, HEIGHT 35 mm





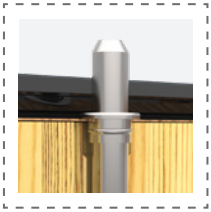
## PARAMETERS

	ANTI-BURGLARY PROTECTION CLASS	<b>RC2 / RC3*</b>
	LEAF THICKNESS	<b>60 mm</b>
	SOUND REDUCTION INDEX	<b>30 / 33* dB</b>
	FILLING	<b>SOUNDPROOFING PACKAGE</b>
	DOOR SIZES	<b>80N, 80, 90N, 90Z, 100E*</b>

RC2 / RC3\*

# GERDA® COMFORT 60

GREAT COMFORT AND SAFETY AT A GOOD PRICE



### VERTICAL DEADBOLT\*

Anti-burglary vertical bar controlled from the main lock. Available in the RC3 package.



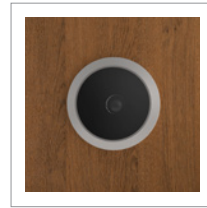
### FILLING

Special filling providing good acoustic comfort.



### BARS\*

Specially developed design of thickened and hardened steel bar protecting against burglary. Available in RC3 class.



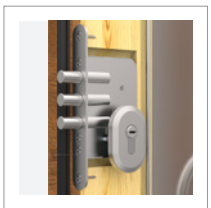
### VIEWER

Wide-angle viewer as standard with very good optical parameters.



### 3D HINGE WITH CAPS

Hinges adjustable in three planes with caps matching fitting's colour.



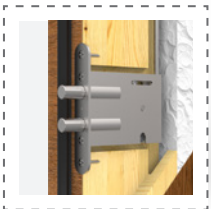
### ADDITIONAL LOCK

Additional class 6 top lock with an anti-burglary class 5 or 6 lock cylinder.



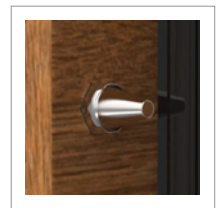
### MAIN LOCK

Class 7 main lock with thickened and reinforced deadbolt with class 5 or class 6 anti-burglar lock cylinder.



### AUXILIARY LOCK\*

Bottom auxiliary lock with double deadbolt system controlled from the main lock. Available in RC3 pack.



### 2 FIXED BOLTS

Fixed bolts protecting against forcing the door.



### RIGID CHAIN\*



### SINGLE KEY SYSTEM

## DOOR FRAMES



FD



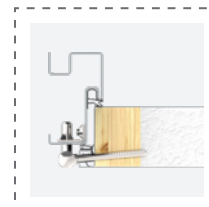
FN



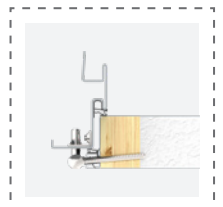
FA\*



FT\*



FA PORTAL\*



FT PORTAL\*

\* EXTRA CHARGE

GREAT COMFORT AND SAFETY AT A GOOD PRICE

## DOOR LEAF DESIGNS WITH INOX INSERTS\*



**TML TOKIO 1 INSERT**



**TMM TOKIO 2 INSERT**

<b>SIZE</b>	80N	80	90N	90Z	100E*
-------------	-----	----	-----	-----	-------

**MODEL** COMFORT 60

### WOOD PLAIN

### RC2 STANDARD ELEMENTS

COMFORT 60 DOOR LEAF (30 dB)	FITTINGS SET WITH MAIN LOCK CYLINDER PROTECTION
DOOR FRAME WITHOUT SEAL	WIDE-ANGLE VIEWER
ADJUSTABLE 3D HINGES WITH CAPS MATCHING FITTING'S COLOUR	HANDLES: BLOK, BERGEN OR OSLO
LAMINATED THRESHOLD WITH SEAL 19 mm OR 32 mm	CLASS 5 LOCK CYLINDERS IN SINGLE KEY SYSTEM

### EXTRA CHARGES

SOUNDPROOFING PACKAGE 33 dB	CLASS 6 CYLINDERS IN SINGLE KEY SYSTEM
DOOR FRAME WITH SEAL	2.4" ELECTRONIC VIEWER
RC3 PACKAGE	4.3" ELECTRONIC VIEWER
SIZE 100E	INOX THRESHOLD WITH SEAL HEIGHT 19 OR 32 mm
DOOR SHORTENING (20, 30, 40, 50, 60, 70 mm)	PRÓG NORWESKI DREWNIANY Z USZCZELKĄ WYSOKOŚĆ 19 mm
SINGLE-SIDE PATTERN TML TOKIO 1 INSERT, TMM TOKIO 2 INSERT	NORWEGIAN WOODEN THRESHOLD WITH ALUMINIUM STRIP AND SEAL HEIGHT 28 mm
DOUBLE-SIDE PATTERN TML TOKIO 1 INSERT, TMM TOKIO 2 INSERT	NORWEGIAN WOODEN THRESHOLD WITH WOODEN STRIP AND SEAL HEIGHT 35 mm
TWO-COLOUR DOORS	RIGID CHAIN <sup>1,2</sup>
HANDLE-KNOB	UPPER ESCUTCHEON PROTECTION
DEEP STAMPING <sup>3</sup> DOUBLE-SIDE PATTERN: W13 LONDYN STAMPING, TMT TOKIO 1 STAMPING, TMU TOKIO 2 STAMPING, SR4 TROMSO 1 STAMPING	TEDEE SET
	<b>DOORS HEIGHT RAISED 100 mm</b>

<sup>1</sup>For frame extended by 6 mm, with the DPO mounting system

<sup>2</sup>For frames with the DPO mounting system (frame dowel joint), metal door

<sup>3</sup>Patterns available for Comfort 60 RC2 / RC3 (30 dB)

### DOOR FRAMES

**FD**



**FN**



**FA\***



**FT\***



### DOOR COLOURS

**ALPINE WALNUT**



**FRR**

**BRAZIL WALNUT**



**FRB**

**LIGHT WALNUT**



**FRP**

**GOLDEN OAK**



**FDE**

**WINCHESTER**



**FDW**

**LIGHT WENGE**



**FEJ**

**WHITENED WENGE**



**FBJ**

**WHITE**



**FSB**

**STEEL GREY**



**FKZ**

**ANTHRACITE**



**FKG**

**DARK ANTHRACITE**



**FKF**

**BLACK**



**FKC**



GREAT COMFORT AND SAFETY AT A GOOD PRICE

DOOR LEAF DESIGNS  
WITH DEEP STAMPING AND PLAIN DESIGN\*



W13 LONDYN STAMPING



TMT TOKIO 1 STAMPING



TMU TOKIO 2 STAMPING



SR4 TROMSO 1 STAMPING



W00 PLAIN

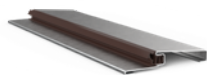
### THRESHOLDS

#### LAMINATED



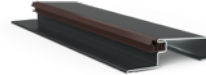
WITH SEAL  
HEIGHT 19 mm

#### INOX\*



WITH SEAL  
HEIGHT 19 mm

#### LAMINATED / INOX\*

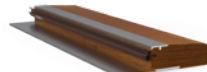


WITH SEAL  
HEIGHT 32 mm

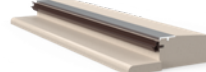
#### NORWEGIAN WOODEN\* (brown, light brown, light)



WITH SEAL  
HEIGHT 19 mm



WITH ALUMINUM STRIP  
AND SEAL, HEIGHT 28 mm



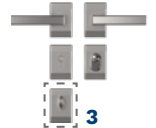
WITH WOODEN STRIP  
AND SEAL, HEIGHT 35 mm

\* EXTRA CHARGE

### FITTINGS

RC2  
RC3

#### BERGEN TW300



RC2

RC3

#### BERGEN TD200 BERGEN TD300



RC2

#### BLOK TW200



RC2

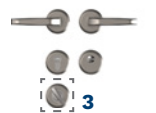
RC3

#### BLOK TD200 BLOK TD300



RC2

#### OSLO



FITTINGS COLOUR  
BERGEN, BLOK

#### PLATINUM ANODE



#### SILVER ANODE



#### BLACK ANODE



FITTINGS COLOUR  
OSLO

#### SATIN NICKEL








1 upper escutcheon without lock cylinder protection  
2 upper escutcheon with lock cylinder protection\*  
3 rigid chain\*



**Gerda ENJOY doors** are anti-burglary doors dedicated for use inside the buildings as front door to residential apartments. Construction of the Gerda ENJOY door leaf is based on the frame made of an MDF profile reinforced with a steel flat bar and filled with an acoustic package made of natural composite panel. The use of acoustic filling results in increased sound reduction index of 32 dB. Construction of Gerda ENJOY door leaf is covered on both sides with MDF panels. Gerda ENJOY door is equipped with a double set of chamber sealing along the perimeter of the door leaf, the frame and the threshold to ensure good parameters of insulation. The door leaf and the frame are covered with Finish foil with wood-like pattern imitating natural wood grain.

## PARAMETERS

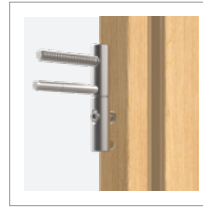
	ANTI-BURGLARY PROTECTION CLASS	<b>RC1N</b>
	LEAF THICKNESS	<b>46 mm</b>
	SOUND REDUCTION INDEX	<b>32 dB</b>
	DOOR SIZES	<b>80, 90</b>
	FILLING	<b>SOUNDPROOFING PACKAGE</b>



**DOOR LEAF WITH SEAL**



**WOODEN DOOR FRAME WITH SEAL**

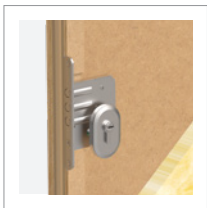


**3D HINGES**

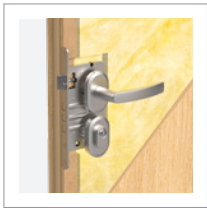
Adjustable in three planes, 4 pcs.



**DOOR THICKNESS**



**ADDITIONAL LOCK**



**MAIN LOCK**



**ADJUSTABLE LATCH CATCH**

Allows seamless adjustment of the door leaf pressure against the gaskets.



**3 FIXED BOLTS**

Fixed bolts in metal supports protecting against forcing the door.

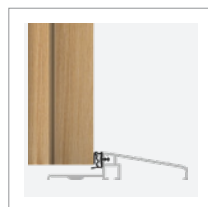


**ALUMINIUM THRESHOLD WITH SEAL**

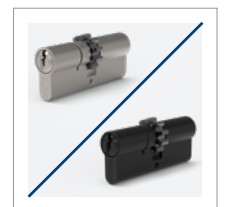
WOODEN FRAME



ALUMINIUM THRESHOLD



**ACOUSTIC FILLING**



**SINGLE KEY SYSTEM**

Black colour not available for class 2 cylinders



COMFORT AND SAFETY AT AN AFFORDABLE PRICE



**W00 FDG MOUNTAIN OAK**

<b>SIZE</b>	80	90
-------------	----	----

<b>MODEL</b>	<b>ENJOY</b>
--------------	--------------

**W00 PLAIN**

**RC1N STANDARD ELEMENTS**

ENJOY DOOR LEAF (30 dB WITH SEAL)	FITTINGS SET WITH MAIN LOCK CYLINDER PROTECTION
WOODEN DOOR FRAME WITH SEAL	BLOK TW200 SPLIT ESCUTCHEON + HANDLES
ADJUSTABLE 3D HINGES	CLASS 2 LOCK CYLINDERS IN SINGLE KEY SYSTEM
ALUMINUM THRESHOLD WITH SEAL 19 mm	

**EXTRA CHARGES**

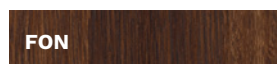
DOOR SHORTENING (30, 50, 70 mm)	WIDE-ANGLE VIEWER
UPPER ESCUTCHEON PROTECTION	2.4" ELECTRONIC VIEWER
CLASS 5 LOCK CYLINDERS IN SINGLE KEY SYSTEM	4.3" ELECTRONIC VIEWER
CLASS 6 LOCK CYLINDERS IN SINGLE KEY SYSTEM	TEDEE SET



**W00 INSIDE**

**DOOR COLOURS**

**NORTH WALNUT**



**F0N**

**MOUNTAIN OAK**



**FDG**

**GREY OAK**



**FDS**

**SILVER**



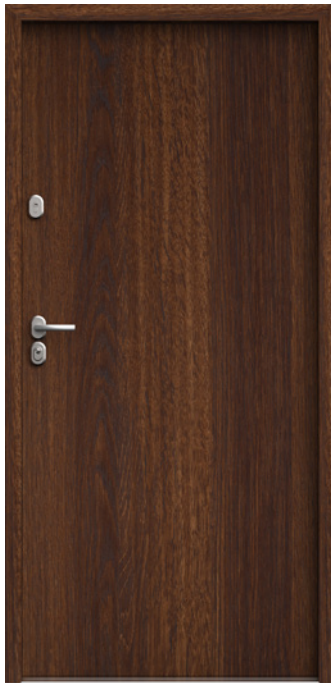
**FSI**

**SONOMA**



**FSS**

COMFORT AND SAFETY AT AN AFFORDABLE PRICE



**W00 FON WALNUT NORTH**



**W00 FDS GREY OAK**



**W00 FSI SILVER**



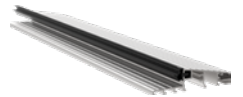
**W00 FSS SONOMA**

### FITTINGS

**BLOK TW200**



**ALUMINIUM  
THRESHOLD**



**WOODEN  
DOOR FRAME**



### FITTINGS COLOUR

**PLATINUM ANODE**



**SILVER ANODE**



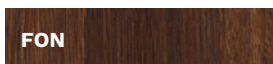
**BLACK ANODE**



1 upper escutcheon without cylinder protection  
2 upper escutcheon with cylinder protection\*

### DOOR COLOURS

**NORTH WALNUT**



**FON**

**MOUNTAIN OAK**



**FDG**

**GREY OAK**



**FDS**

**SILVER**



**FSI**

**SONOMA**



**FSS**

\* EXTRA CHARGE

# PORTALS AND DOOR TRIMS

# GERDA®

BRING OUT THE ELEGANCE OF YOUR DOOR



**Door trim (2400 x 80 x 12 mm) – available only with FA door frame.**

## DOOR TRIMS\*

This element improves the appearance of the entrance to the apartment. It makes your door stand out among regular doors. It can be applied in GERDA metal doors and with ELITE package in sizes 80N, 80, 90, 90Z, 100E. They are available in sets for one or both door sides.



## DOOR PORTALS\*

This is a special type of door trim, used in the specific frame casing that visibly brings out the elegance of the door. Much like the door trims, the door portal can be used in GERDA metal doors and with ELITE package in sizes 80N, 80, 90, 90Z, 100E. The decision to purchase door portals should be made already when ordering a door, because they are fixed to special frames available at an extra charge.



## COLOUR PALETTE

**ALPINE  
WALNUT**

**FRR**

**BRAZILIAN  
WALNUT**

**FRB**

**LIGHT  
WALNUT**

**FRP**

**GOLDEN OAK**

**FDE**

**WINCHESTER**

**FDW**

**LIGHT  
WENGE**

**FEJ**

**WHITENED  
WENGE**

**FBJ**

**WHITE**

**FSB**

**STEEL GREY**

**FKZ**



# GERDA® PORTALS AND DOOR TRIMS

BRING OUT THE ELEGANCE OF YOUR DOOR



## DOOR PORTAL\*

Add up each of the parts **L** – left, **P** – right and **W** – top, to get the total price for the portal. Thickness of the portal is 18 mm for dimension **G** and 12 mm for dimension **L, P, W**. The overall width of the compound is the sum of the widths of the door (outer frame dimension) and width of the right and the left side of the portal. Similarly, the height of the compound is the sum of the door height with frame and the height of the top side of the portal. NRO board (that does not spread fire) +40% to the given prices.

Wall lining in mm	L	P	W
50 - 100	✓	✓	✓
110 - 150	✓	✓	✓
160 - 200	✓	✓	✓
210 - 250	✓	✓	✓
260 - 300	✓	✓	✓
310 - 350	✓	✓	✓
360 - 400	✓	✓	✓
410 - 450	-	-	✓
460 - 500	-	-	✓
510 - 550	-	-	✓
560 - 600	-	-	✓
NRO (fire resistant board)	+40% extra charge to the set		

Portal depth <b>G</b> in mm stroke every 5 mm		FA door frame with groove in mm	Wall thickness in mm		Portal depth <b>G</b> in mm stroke every 5 mm		FT door frame with groove in mm for metal doors/ elite package	Wall thickness in mm	
from 50	to 400	80	from 130	to 480	from 50	to 400	70/75	from 120/125	to 470/475

GREY	DARK BROWN	ANTHRACITE	DARK ANTHRACITE	BLACK	SILICON	MARBLE	HAEMATITE	QUARTZ	WENGE
FKT	FKX	FKG	FKF	FKC	FKL	FKA	FDL	FKH	FEE

\* EXTRA CHARGE

# PORTALS AND DOOR TRIMS

# GERDA®

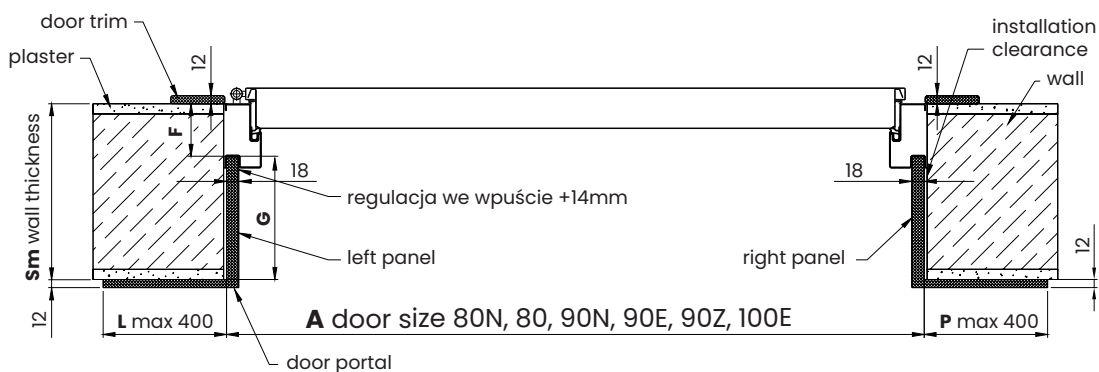
BRING OUT THE ELEGANCE OF YOUR DOOR

## FA PORTAL\*

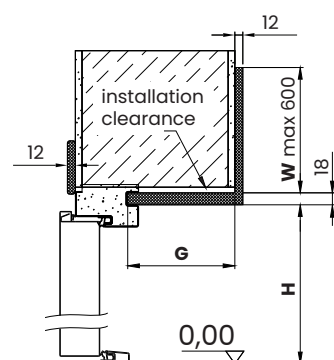
### ASYMMETRICAL FRAME WITH SEAL AND GROOVE FOR PORTAL OR TRIM

F = 80 mm

HORIZONTAL CROSS-SECTION



VERTICAL CROSS-SECTION



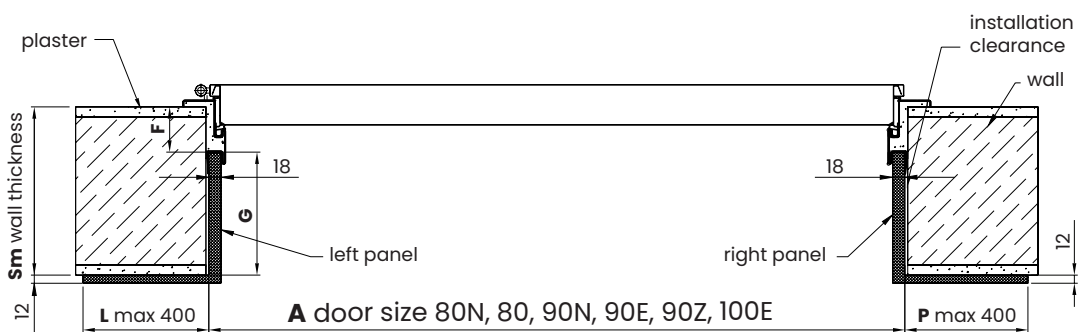
## FT PORTAL\*

### CORNER FRAME WITH SEAL AND GROOVE FOR PORTAL OR TRIM

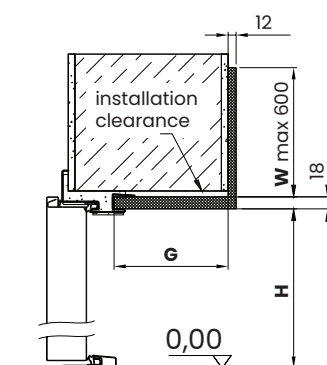
F = 70 mm – metal doors

F = 75 mm – doors with ELITE package

HORIZONTAL CROSS-SECTION



VERTICAL CROSS-SECTION



## LEGEND

- G** - portal depth (mm)
- L** - width of the left lining (mm)
- P** - width of the right lining (mm)
- F** - diameter from the edge of the wall till the bottom of the groove

**G = Sm - F (mm)**

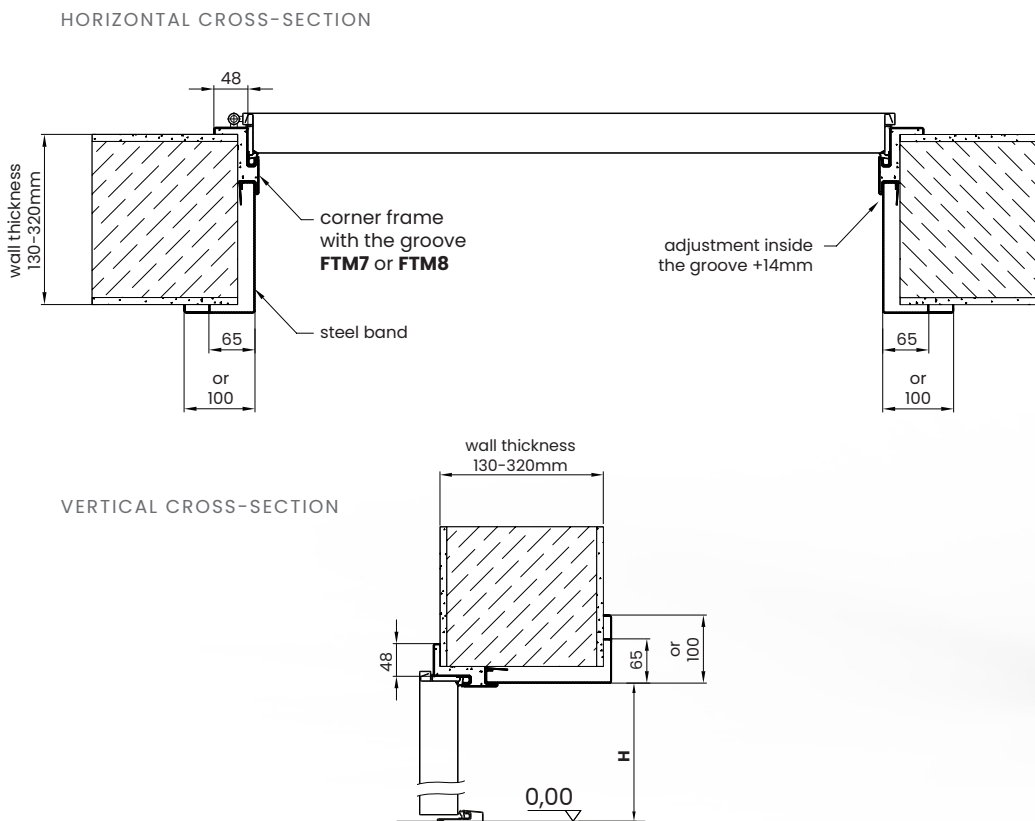
- W** - height of portal's vertical beam (mm)
- H** - height of portal's vertical beam (mm)

For std height:  
 FT = 2030 mm, FA = 2058 mm  
**A** - door size: 80N, 80, 90N, 90E, 90Z, 100E  
**Sm** - wall thickness (mm)

**CAUTION! Dimensions on the inside of the portal measured from the edge of the wall do not include the thickness of the material.**

### FTM7 / FTM8 PORTAL\*

#### CORNER FRAME WITH SEAL AND GROOVE FOR STEEL TRIM



DOOR FRAME	DOOR MODEL	WALL THICKNESS (in mm) Stroke every 10 mm	WALL LINING IN mm
<b>FTM7</b>	Comfort RC2 / RC3 Premium RC2 / RC3	130 - 230	65
<b>FTM7</b>	Comfort RC2 / RC3 Premium RC2 / RC3	240 - 300	65
<b>FTM7</b>	Comfort RC2 / RC3 Premium RC2 / RC3	310 - 320	65
<b>FTM7</b>	Comfort RC2 / RC3 Premium RC2 / RC3	130 - 230	100
<b>FTM7</b>	Comfort RC2 / RC3 Premium RC2 / RC3	240 - 300	100
<b>FTM7</b>	Comfort RC2 / RC3 Premium RC2 / RC3	310 - 320	100
<b>FTM8</b>	Premium RC2 / RC3 EI30 / EI45 / EI60	130 - 230	65
<b>FTM8</b>	Premium RC2 / RC3 EI30 / EI45 / EI60	240 - 300	65
<b>FTM8</b>	Premium RC2 / RC3 EI30 / EI45 / EI60	310 - 320	65
<b>FTM8</b>	Premium RC2 / RC3 EI30 / EI45 / EI60	130 - 230	100
<b>FTM8</b>	Premium RC2 / RC3 EI30 / EI45 / EI60	240 - 300	100
<b>FTM8</b>	Premium RC2 / RC3 EI30 / EI45 / EI60	310 - 320	100

# ACCESSORIES AND FITTINGS

# GERDA®

## LIST OF ELEMENTS

HANDLES				ENJOY	COMFORT	PREMIUM	PREMIUM			STAR
				EI30	EI45	EI60	STAR			
	BERGEN (handle - handle) TD200 BERGEN (handle - handle) TD300 BERGEN (handle - handle) TD1000	<b>RC2</b> <b>RC3</b> <b>RC4</b>	—	✓	✓	✓	—	—	—	
			—	✓	✓	—	—	—		
			—	—	✓	✓	—	—		
	BERGEN (knob - handle) TD200 BERGEN (knob - handle) TD300 BERGEN (knob - handle) TD1000	<b>RC2</b> <b>RC3</b> <b>RC4</b>	—	✓	✓	✓	—	—	—	
			—	✓	✓	—	—	—		
			—	—	✓	✓	—	—		
	BERGEN (handle - handle)		—	✓	✓	✓	—	—		
	BLOK (handle - handle) TD200 BLOK (handle - handle) TD300 BLOK (handle - handle) TD1000	<b>RC2</b> <b>RC3</b> <b>RC4</b>	—	✓	✓	✓	—	—	—	
			—	✓	✓	—	—	—		
			—	—	✓	✓	—	—		
	BLOK (knob - handle) TD200 BLOK (knob - handle) TD300 BLOK (knob - handle) TD1000	<b>RC2</b> <b>RC3</b> <b>RC4</b>	—	✓	✓	✓	—	—	—	
			—	✓	✓	—	—	—		
			—	—	✓	✓	—	—		
	BLOK (handle - handle)		✓	✓	✓	✓	—	—		
	OSLO (handle - handle)		—	✓	✓	—	—	—		
	TECHNO - (handle - handle) TECHNO - (handle - handle)		—	—	—	—	—	✓	✓	
			—	—	—	—	—	✓	✓	
ESCUTCHEONS				ENJOY	COMFORT	PREMIUM	PREMIUM			STAR
				EI30	EI45	EI60	STAR			
	BERGEN TW300 split escutcheon with lock cylinder protection	<b>RC2</b> <b>RC3</b>	—	✓	✓	✓	—	—		
			—	✓	✓	—	—	—		
	BERGEN split escutcheon without lock cylinder protection		—	✓	✓	—	—	—		
			—	✓	✓	—	—	—		
	BLOK TW1000 split escutcheon with lock cylinder protection	<b>RC4</b>	—	✓	✓	✓	—	—		
				—	✓	✓	—	—	—	
	BLOK TW200 split escutcheon with lock cylinder protection	<b>RC2</b>	✓	✓	✓	✓	—	—		
				✓	✓	✓	—	—	—	
	BLOK split escutcheon without lock cylinder protection		✓	✓	✓	—	—	—		
			✓	✓	✓	—	—	—		
	OSLO split escutcheon with lock cylinder protection	<b>RC2</b>	—	✓	✓	—	—	✓		
				—	✓	✓	—	—	✓	
	OSLO split escutcheon without lock cylinder protection		—	✓	✓	—	—	—		
			—	✓	✓	—	—	—		



ACCESSORIES		ENJOY	COMFORT	PREMIUM	PREMIUM			STAR
					EI30	EI45	EI60	
	WIDE-ANGLE VIEWER 50/85	✓	✓	✓	✓			✓
	2.4" ELECTRONIC VIEWER	✓	✓	✓	✓			✓
	4.3" ELECTRONIC VIEWER	✓	✓	✓	✓			✓
	HINGE CAPS FI 18 mm	—	—	—	—			✓
	3D HINGE CAPS FI 16 mm	—	✓	✓	✓			—
	GEZE DOOR CLOSER GT 1500 STANDARD	—	✓	✓	✓			✓
	GEZE DOOR CLOSER GT 1500 LOCK	—	✓	✓	✓			✓
	GEZE DOOR CLOSER GT 3000 STANDARD	—	✓	✓	✓			✓
	GEZE DOOR CLOSER GT 3000 LOCK	—	✓	✓	✓			✓
	ASSEMBLY THRESHOLD	—	✓	✓	✓			✓
	LAMINATED THRESHOLD 19 mm / 32 mm (MATCHING THE COLOUR OF DOOR FRAME)	—	✓	✓	✓			✓
	INOX THRESHOLD 19 mm	—	✓	✓	✓			✓
	INOX THRESHOLD 32 mm	—	✓	✓	—			✓
	19 mm NORWEGIAN WOODEN THRESHOLD WITH SEAL AND ALUMINIUM COVER, AVAILABLE IN 3 COLOURS (BRONZE, LIGHT BRONZE, LIGHT)	—	✓	✓	✓			✓
	28 mm NORWEGIAN WOODEN THRESHOLD WITH SEAL, ALUMINIUM COVER AND STRIP, AVAILABLE IN 3 COLOURS (BRONZE, LIGHT BRONZE, LIGHT)	—	✓	✓	✓			✓
	35 mm NORWEGIAN WOODEN THRESHOLD WITH SEAL, ALUMINIUM COVER AND WOODEN STRIP AVAILABLE IN 3 COLOURS (BRONZE, LIGHT BRONZE, LIGHT)	—	✓	✓	—			✓

# ACCESSORIES AND FITTINGS

# GERDA®

## LIST OF ELEMENTS

ACCESSORIES			ENJOY	COMFORT	PREMIUM	PREMIUM			STAR
						EI30	EI45	EI60	
	FAIL-SECURE ELECTRIC DOOR STRIKE NC (NO VOLTAGE – CLOSED)	<b>RC2 RC3 RC4</b>	–	✓	✓	–	–	–	✓
	FAIL-SECURE FIRE-RESISTANT ELECTRIC DOOR STRIKE NC (NO VOLTAGE – CLOSED)	<b>RC2 RC3 RC4</b>	–	–	–	✓	–	–	–
	FAIL-SECURE ELECTRIC DOOR STRIKE NO (NO VOLTAGE – OPEN)	<b>RC2 RC3 RC4</b>	–	✓	✓	–	–	–	✓
	FAIL-SECURE ELECTRIC DOOR STRIKE NC (REED SWITCH INTEGRATED)	<b>RC2 RC3 RC4</b>	–	✓	✓	–	–	–	✓
	FAIL-SECURE FIRE-RESISTANT ELECTRIC DOOR STRIKE NC (REED SWITCH INTEGRATED)	<b>RC2 RC3 RC4</b>	–	–	–	✓	–	–	–
	LAMINATED CLOSURE DOOR TRIM*		–	✓	✓	✓	✓	✓	✓
	NUMERIC KEYPAD FOR ACCESS CONTROL		–	✓	✓	✓	✓	✓	✓
	IMPULSE POWER SUPPLY PSC12015 RECOMMENDED FOR DOORS EQUIPPED WITH AN ELECTRIC STRIKE		–	✓	✓	✓	✓	✓	✓
	MORTAR VARNISH 12 ml		✓	✓	✓	✓	✓	✓	✓
	CYLINDER MAINTENANCE PREPARATION 25 ml		✓	✓	✓	✓	✓	✓	✓
	CYLINDER MAINTENANCE PREPARATION 100 ml		✓	✓	✓	✓	✓	✓	✓
	CYLINDER MAINTENANCE PREPARATION 400 ml		✓	✓	✓	✓	✓	✓	✓
	DOOR MAINTENANCE PREPARATION		✓	✓	✓	✓	✓	✓	✓

\*LAMINATED CLOSURE DOOR TRIM – Necessary when self-shortening the leaf in the range 20, 30, 40, 50, 60, 70 and 20.35 mm and 20 and 35 mm for RC4. Not available for fire-resistant and ELITE package doors.

### ENJOY

### LOCK CYLINDERS IN SINGLE KEY SYSTEM

SIZE	MAIN LOCK	ADDITIONAL LOCK	KEYS QUANTITY	CYLINDER CLASS
28/45; 30/45	DRIVER	DRIVER/KNOB	6 FINAL KEYS	<b>CLASS 2</b>
30/45; 30/45	DRIVER	DRIVER/KNOB	5 + INSTALLER KEYS	<b>CLASS 5</b>
30/45; 30/45	DRIVER	DRIVER/KNOB	5 + INSTALLER KEYS	<b>CLASS 6</b>

### COMFORT 60 & PREMIUM 60

SIZE	MAIN LOCK	ADDITIONAL LOCK	KEYS QUANTITY	CYLINDER CLASS
35/55z; 35/55	GEAR	DRIVER/KNOB (ESCUTCHEON WITH CYLINDER PROTECTION)	5 + INSTALLER KEYS	<b>CLASS 5</b>
35/55z; 30/50	GEAR	DRIVER/KNOB (ESCUTCHEON WITHOUT CYLINDER PROTECTION)	5 + INSTALLER KEYS	<b>CLASS 5</b>
35/55z; 35/55	GEAR	DRIVER/KNOB (ESCUTCHEON WITH CYLINDER PROTECTION)	5 + INSTALLER KEYS	<b>CLASS 5</b>
35/55z; 30/50	GEAR	DRIVER/KNOB (ESCUTCHEON WITHOUT CYLINDER PROTECTION)	5 + INSTALLER KEYS	<b>CLASS 5</b>

### PREMIUM 60 ELITE PACKAGE

SIZE	MAIN LOCK	ADDITIONAL LOCK	KEYS QUANTITY	CYLINDER CLASS
35/60z; 35/60	GEAR	DRIVER/KNOB (OPENING INWARDS, ESCUTCHEON WITH CYLINDER PROTECTION)	5 + INSTALLER KEYS	<b>CLASS 5</b>
35/60z; 35/55	GEAR	DRIVER/KNOB (OPENING INWARDS, ESCUTCHEON WITHOUT CYLINDER PROTECTION)	5 + INSTALLER KEYS	<b>CLASS 5</b>
40/55z; 40/55	GEAR	DRIVER/KNOB (OPENING OUTWARDS, ESCUTCHEON WITH CYLINDER PROTECTION)	5 + INSTALLER KEYS	<b>CLASS 5</b>
50/55z; 35/55	GEAR	DRIVER/KNOB (OPENING OUTWARDS, ESCUTCHEON WITHOUT CYLINDER PROTECTION)	5 + INSTALLER KEYS	<b>CLASS 5</b>
35/60z; 35/60	GEAR	DRIVER/KNOB (OPENING INWARDS, ESCUTCHEON WITH CYLINDER PROTECTION)	5 + INSTALLER KEYS	<b>CLASS 6</b>
35/60z; 35/55	GEAR	DRIVER/KNOB (OPENING INWARDS, ESCUTCHEON WITHOUT CYLINDER PROTECTION)	5 + INSTALLER KEYS	<b>CLASS 6</b>
40/55z; 40/55	GEAR	DRIVER/KNOB (OPENING OUTWARDS, ESCUTCHEON WITH CYLINDER PROTECTION)	5 + INSTALLER KEYS	<b>CLASS 6</b>
50/55z; 35/55	GEAR	DRIVER/KNOB (OPENING OUTWARDS, ESCUTCHEON WITHOUT CYLINDER PROTECTION)	5 + INSTALLER KEYS	<b>CLASS 6</b>

### STAR 60

SIZE	MAIN LOCK	ADDITIONAL LOCK	KEYS QUANTITY	CYLINDER CLASS
	RIM 6000	-	5 FINAL KEYS	<b>CLASS 6</b>
35/55	-	DRIVER/KNOB	5 + INSTALLER KEYS	<b>CLASS 5</b>
35/55	-	DRIVER/KNOB	5 + INSTALLER KEYS	<b>CLASS 6</b>

### STAR 60 ELITE PACKAGE

SIZE	MAIN LOCK	ADDITIONAL LOCK	KEYS QUANTITY	CYLINDER CLASS
	RIM 6000	-	5 FINAL KEYS	<b>CLASS 6</b>
35/60	-	DRIVER/KNOB (OPENING INWARDS)	5 + INSTALLER KEYS	<b>CLASS 5</b>
40/55		DRIVER/KNOB (OPENING OUTWARDS)	5 + INSTALLER KEYS	<b>CLASS 5</b>
35/60	-	DRIVER/KNOB (OPENING INWARDS)	5 + INSTALLER KEYS	<b>CLASS 6</b>
40/55		DRIVER/KNOB (OPENING OUTWARDS)	5 + INSTALLER KEYS	<b>CLASS 6</b>

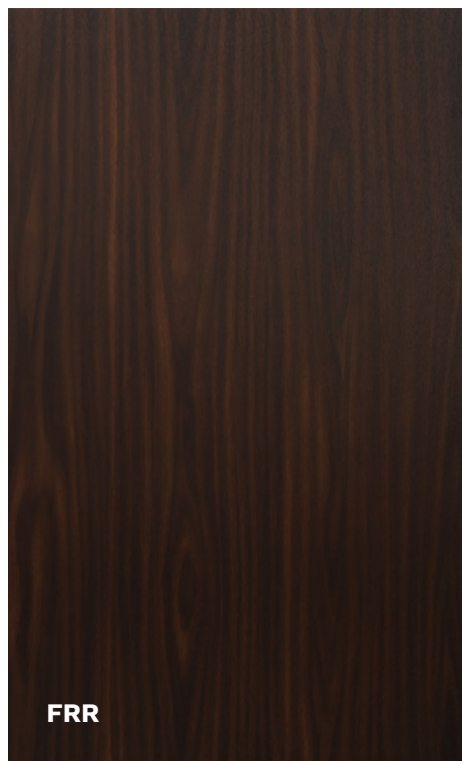
# DOOR COLOURS

# GERDA®

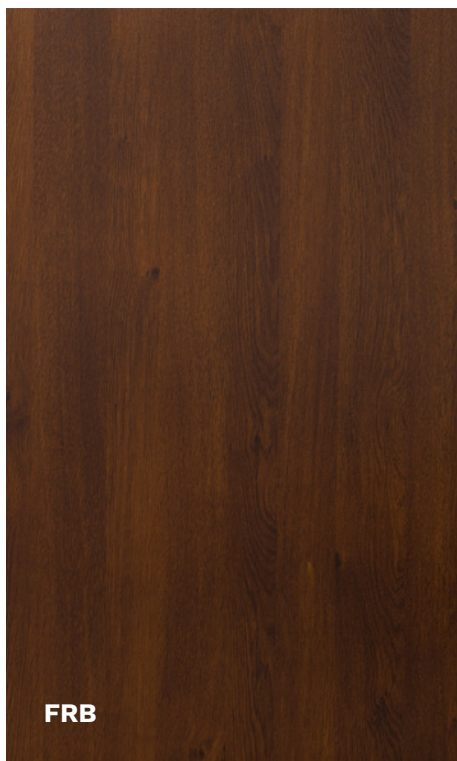
CHOOSE A COLOUR FOR YOUR METAL DOOR AND ELITE PACKAGE

DOOR COLOURS INCLUDING PANELS, MOULDING AND FRAMES OF THE ELITE PACKAGE

ALPINE WALNUT



BRAZILIAN WALNUT



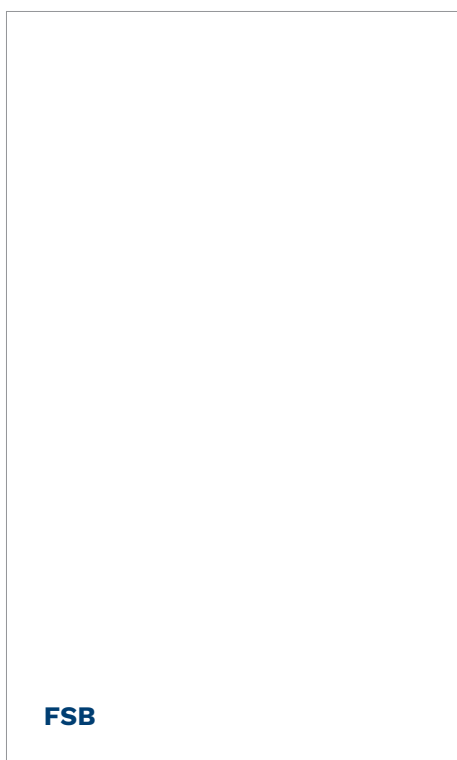
LIGHT WALNUT



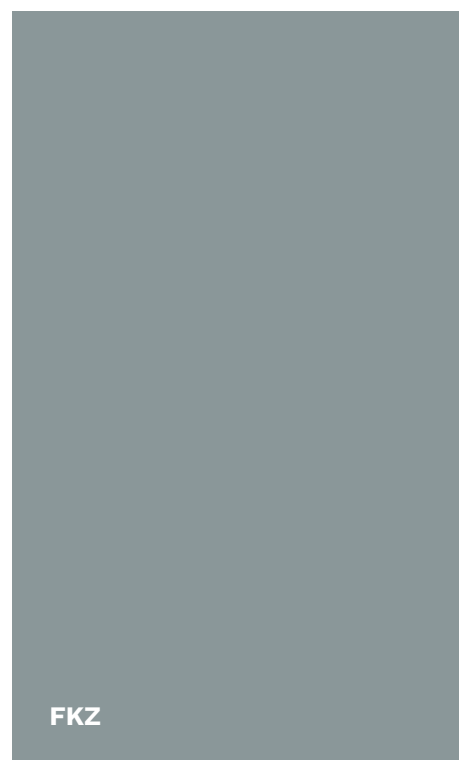
WHITENED WENGE



WHITE



STEEL GREY

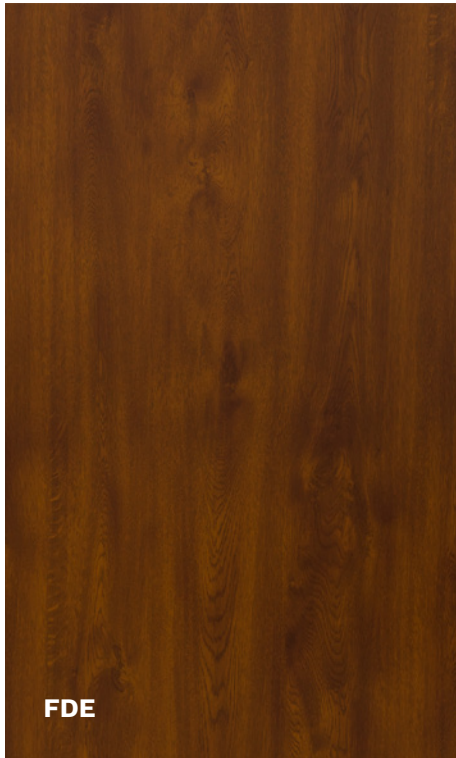




CHOOSE A COLOUR FOR YOUR METAL DOOR AND ELITE PACKAGE

DOOR COLOURS INCLUDING PANELS, MOULDING AND FRAMES OF THE ELITE PACKAGE

GOLDEN OAK



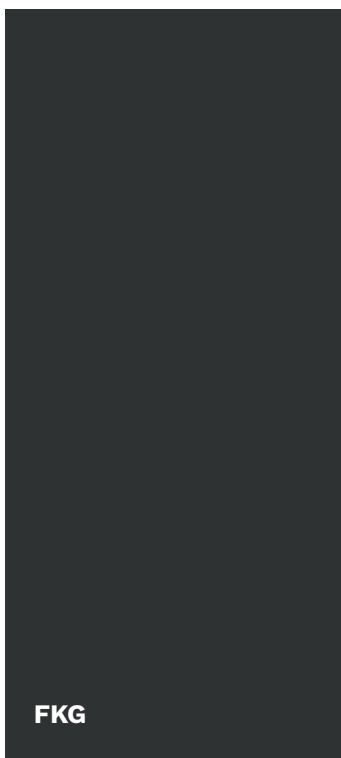
WINCHESTER



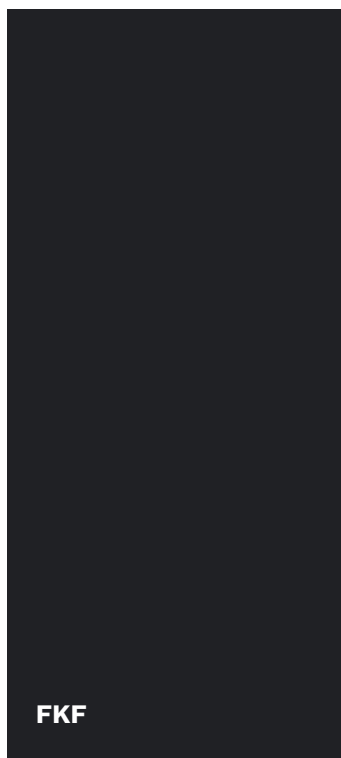
LIGHT WENGE



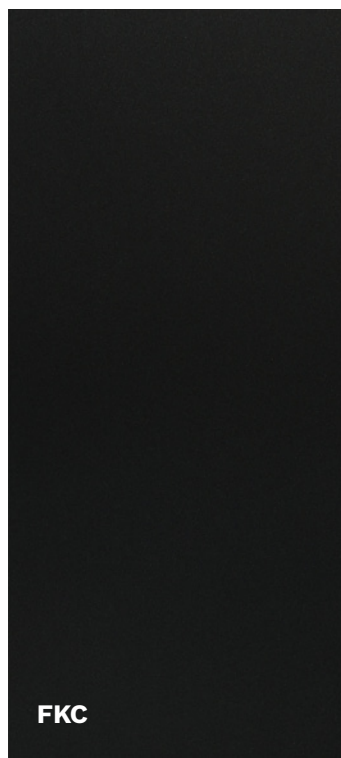
ANTHRACITE



DARK ANTHRACITE



BLACK



TURNER OAK



# A VARIETY OF COLOURS

# GERDA®

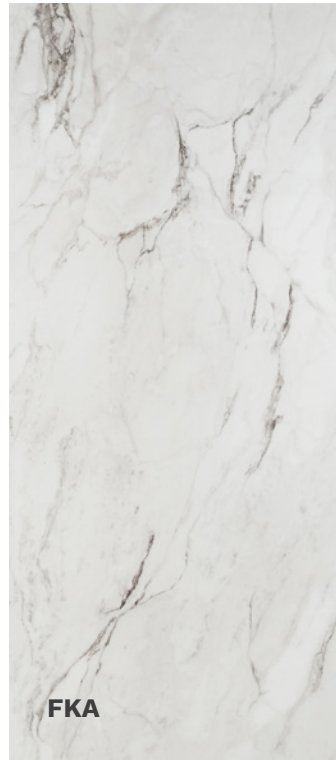
CHOOSE A COLOUR FOR YOUR METAL DOOR AND ELITE PACKAGE

## ELITE PACKAGE

### SILICON



### MARBLE



### HAEMATITE

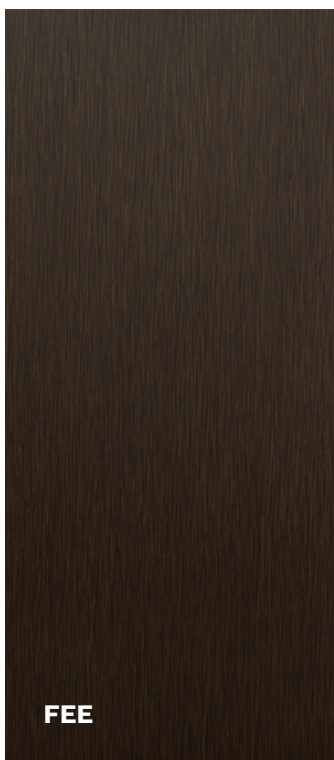


### QUARTZ

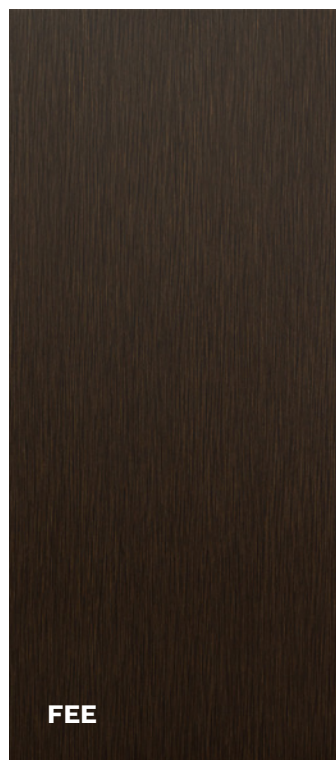


## MOULDING AND FRAMES OF ELITE PACKAGE

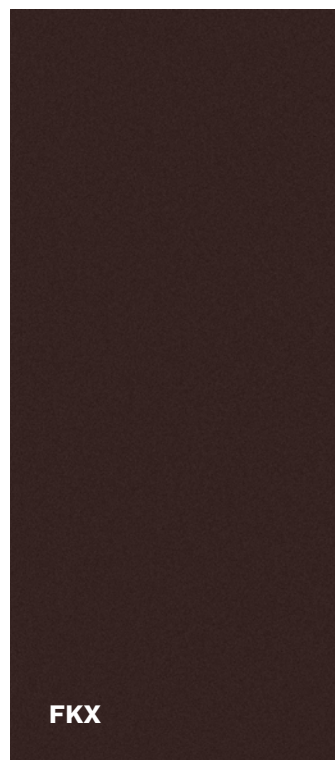
### WENGE



### WENGE



### DARK BROWN



### GREY





### ENJOY DOORS

#### NORTH WALNUT



#### MOUNTAIN OAK



#### GREY OAK



#### SILVER



#### SONOMA





# DOOR AND FRAME DIMENSIONS



## ADDITIONAL INFORMATION FOR ASSEMBLY

### COMFORT 60 DOOR LEAF DIMENSIONS

	METAL DOORS			
SIZE	A	B	C	D
<b>80N</b>	783	813	2025	2040
<b>80</b>	813	843		
<b>90N</b>	883	913		
<b>90E*</b>	926	956		
<b>90Z**</b>	946	976		
<b>100E</b>	1026	1056		

### COMFORT 60 DOOR FRAME DIMENSIONS

#### WKO MOUNTING SYSTEM (ANCHOR+BRACKET)

	FD SYMMETRICAL DOOR FRAME WITHOUT SEAL						ASSEMBLY HOLE	
SIZE	J	K	L	M	N	O	X	Y
<b>80N</b>	764	872	-	2005	2078	-	902	2093
<b>80</b>	794	902	-			-	932	
<b>90N</b>	864	972	-			-	1002	
<b>90Z</b>	927	1035	-			-	1065	
<b>100E</b>	1007	1115	-			-	1145	

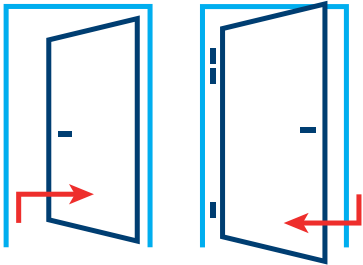
	FN CORNER DOOR FRAME WITHOUT SEAL						ASSEMBLY HOLE	
SIZE	J	K	L	M	N	O	X	Y
<b>80N</b>	764	798	872	2005	2041	2078	829 / 847 <sup>1</sup>	2056
<b>80</b>	794	828	902				859 / 877 <sup>1</sup>	
<b>90N</b>	864	898	972				929 / 947 <sup>1</sup>	
<b>90Z</b>	927	961	1035				992 / 1010 <sup>1</sup>	
<b>100E</b>	1007	1041	1115				1072 / 1090 <sup>1</sup>	

\* 90E - size available only for STAR 60 doors

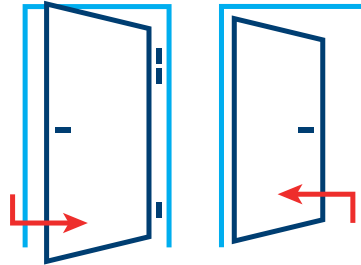
\*\* 90Z - size available only for COMFORT 60 and PREMIUM 60 doors

<sup>1</sup> - dimension of raw installation hole including clearance for deadbolts and fixed bolts caps

## DOOR OPENING DIRECTIONS



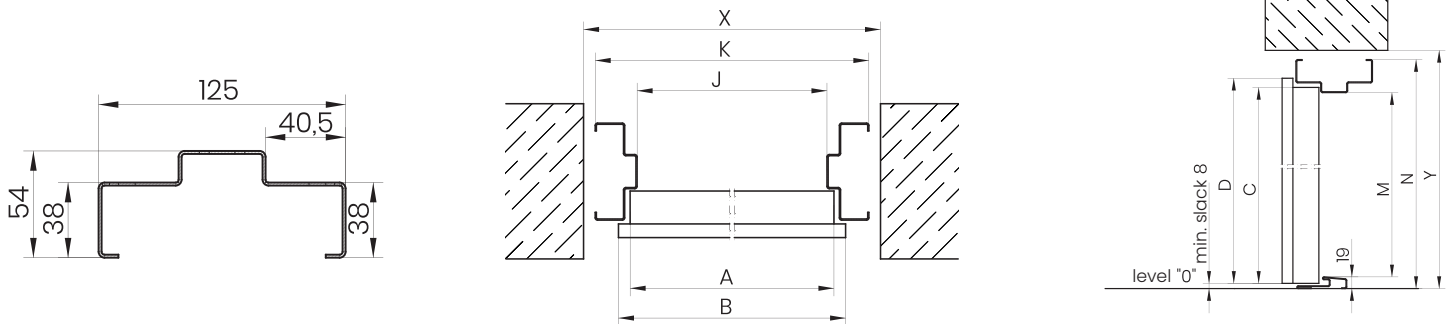
LEFT



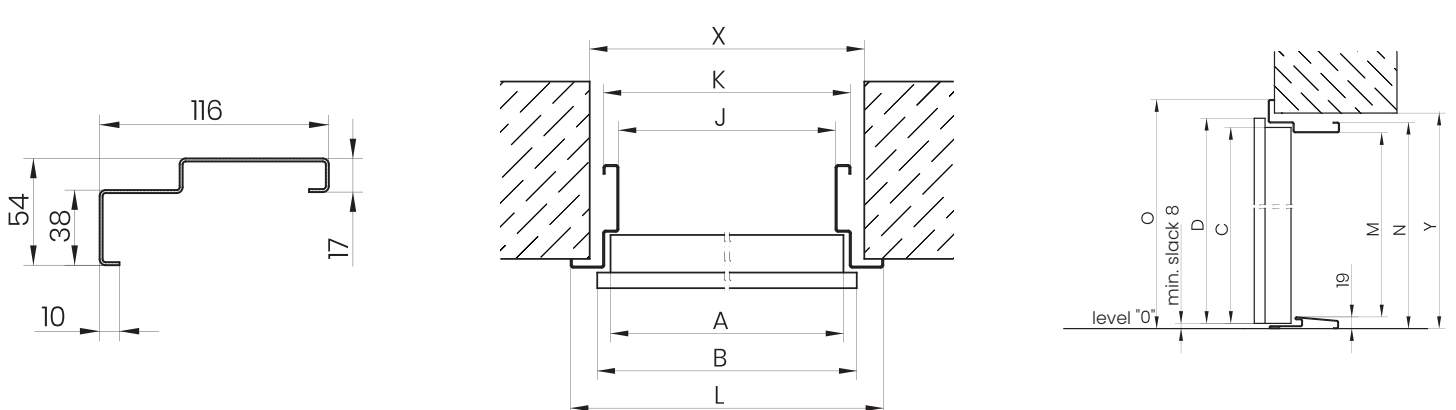
RIGHT

## COMFORT 60 DOORS TECHNICAL DRAWINGS WKO MOUNTING SYSTEM (ANCHOR+BRACKET)

### FD SYMMETRICAL DOOR FRAME WITHOUT SEAL



### FN CORNER DOOR FRAME WITHOUT SEAL



# DOOR AND FRAME DIMENSIONS



## ADDITIONAL INFORMATION FOR ASSEMBLY

### STAR 60, PREMIUM 60, COMFORT 60 DOOR LEAF DIMENSIONS

#### WKO MOUNTING SYSTEM (ANCHOR+BRACKET)

SIZE	METAL DOORS				PANEL DOORS			
	A	B	C	D	A	B	C	D
<b>80N</b>	783	813	2025	2040	786	816	2025	2040
<b>80</b>	813	843			816	846		
<b>90N</b>	883	913			885	915		
<b>90E*</b>	926	956			929	959		
<b>90Z**</b>	946	976			949	979		
<b>100E</b>	1026	1056			1029	1059		

### STAR 60, PREMIUM 60, COMFORT 60 DOOR FRAME DIMENSIONS

#### WKO MOUNTING SYSTEM (ANCHOR+BRACKET)

SIZE	FA ASYMMETRICAL DOOR FRAME WITH SEAL							ASSEMBLY HOLE				
	J	J***	K	K***	L	L***	M	N	O	X	X***	Y
<b>80N</b>	765	761	872	868	-	-	2005	2078	-	902	898	2093
<b>80</b>	795	791	902	898	-	-				932	928	
<b>90N</b>	865	861	972	968	-	-				1002	998	
<b>90E*</b>	908	-	1015	-	-	-				1045	-	
<b>90Z**</b>	928	924	1035	1031	-	-				1065	1061	
<b>100E</b>	1008	1004	1115	1111	-	-				1145	1141	

SIZE	FT CORNER DOOR FRAME WITH SEAL							ASSEMBLY HOLE				
	J	J***	K	K***	L	L***	M	N	O	X	X***	Y
<b>80N</b>	765	761	799	795	872	868	2005	2041	2078	829/847 <sup>1</sup>	825/843 <sup>1</sup>	2057
<b>80</b>	795	791	829	825	902	898				859/877 <sup>1</sup>	855/873 <sup>1</sup>	
<b>90N</b>	865	861	899	895	972	968				929/947 <sup>1</sup>	925/943 <sup>1</sup>	
<b>90E*</b>	908	-	942	-	1015	-				972/990 <sup>1</sup>	-	
<b>90Z**</b>	928	924	962	958	1035	1031				992/1010 <sup>1</sup>	988/1006 <sup>1</sup>	
<b>100E</b>	1008	1004	1042	1038	1115	1111				1072/1090 <sup>1</sup>	1068/1086 <sup>1</sup>	

\* 90E - size available only for STAR 60 doors

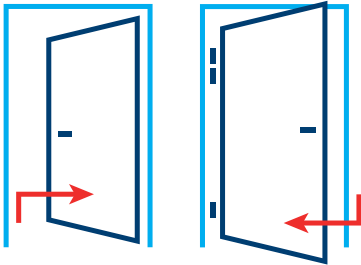
\*\* 90Z - size available only for COMFORT 60 and PREMIUM 60 doors

\*\*\* for E130 metal doors

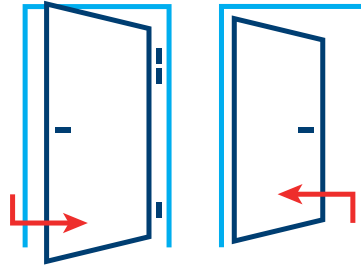
1 - dimension of raw installation hole including clearance for deadbolts and fixed bolts caps



## DOOR OPENING DIRECTIONS



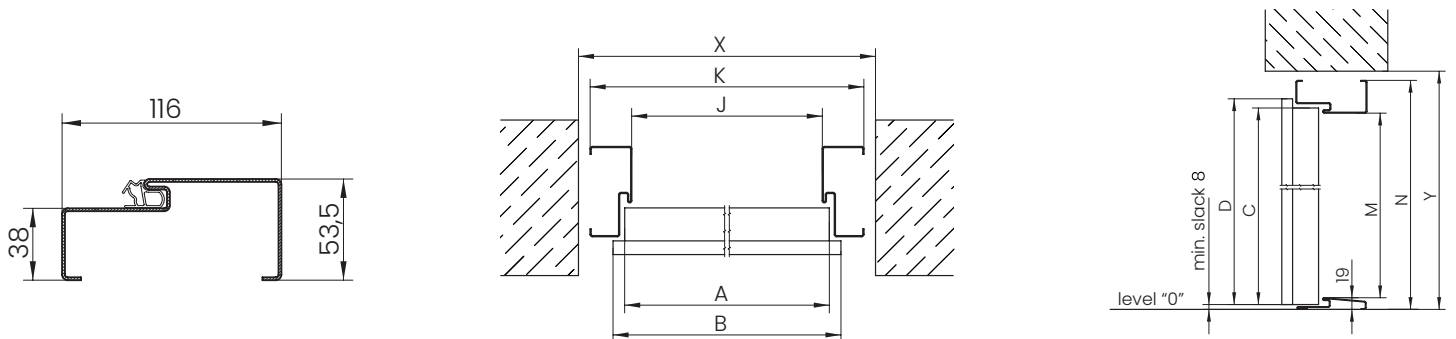
LEFT



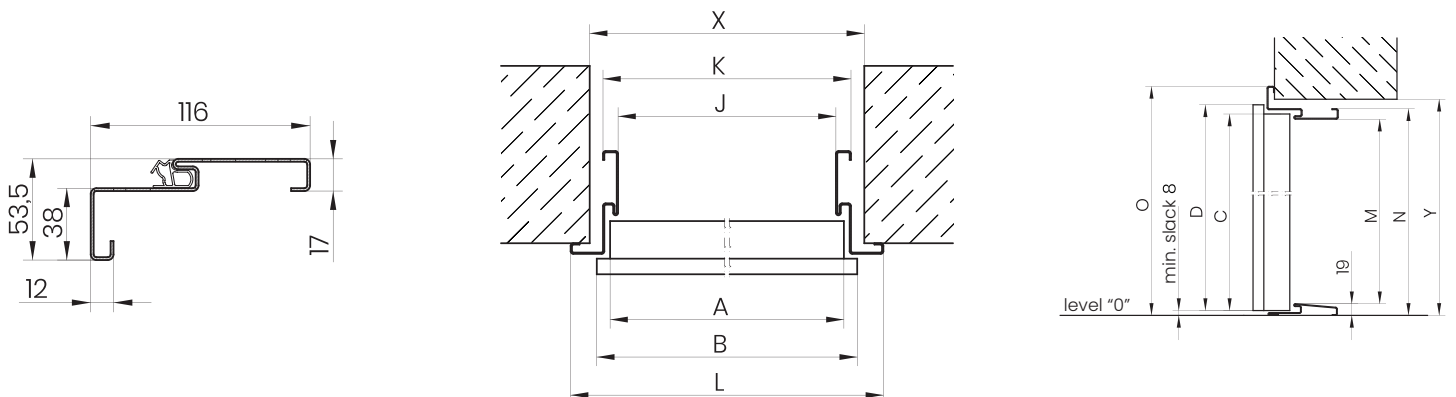
RIGHT

## STAR 60, PREMIUM 60, COMFORT 60 DOORS TECHNICAL DRAWINGS WKO MOUNTING SYSTEM (ANCHOR+BRACKET)

### FA ASYMMETRICAL DOOR FRAME WITH SEAL



### FT CORNER DOOR FRAME WITH SEAL



# DOOR AND FRAME DIMENSIONS



## ADDITIONAL INFORMATION FOR ASSEMBLY

### STAR 60, PREMIUM 60, COMFORT 60 DOOR LEAF DIMENSIONS

	METAL DOORS				PANEL DOORS			
SIZE	A	B	C	D	A	B	C	D
<b>80N</b>	783	813	2025	2040	786	816	2025	2040
<b>80</b>	813	843			816	846		
<b>90N</b>	883	913			885	915		
<b>90E*</b>	926	956			929	959		
<b>90Z**</b>	946	976			949	979		
<b>100E</b>	1026	1056			1029	1059		

### STAR 60, PREMIUM 60, COMFORT 60 DOOR FRAME DIMENSIONS

#### WKO MOUNTING SYSTEM (ANCHOR+BRACKET)

	FA PORTAL ASYMMETRICAL DOOR FRAME WITH GROOVE AND SEAL										ASSEMBLY HOLE		
SIZE	J	J***	K	K***	L	L***	M	N	O	U	X	X***	Y
<b>80N</b>	765	761	872	868	-	-	2005	2078	-	95	902	898	2093
<b>80</b>	795	791	902	898	-	-					932	928	
<b>90N</b>	865	861	972	968	-	-					1002	998	
<b>90E*</b>	908	-	1015	-	-	-					1045	-	
<b>90Z**</b>	928	924	1035	1031	-	-					1065	1061	
<b>100E</b>	1008	1004	1115	1111	-	-					1145	1141	

	FT PORTAL CORNER DOOR FRAME WITH GROOVE AND SEAL											ASSEMBLY HOLE		
SIZE	J	J***	K	K***	L	L***	M	N	O	U <sup>1</sup>	U <sup>2</sup>	X	X***	Y
<b>80N</b>	765	761	821	817	892	888	2005	2052	2088	95 <sup>1</sup>	101 <sup>2</sup>	857	853	2070
<b>80</b>	795	791	851	847	922	918						887	883	
<b>90N</b>	865	861	921	917	992	988						957	953	
<b>90E*</b>	908	-	964	-	1035	-						1000	-	
<b>90Z**</b>	928	924	984	980	1055	1051						1020	1016	
<b>100E</b>	1008	1004	1064	1060	1135	1131						1100	1096	

\* 90E - size available only for STAR 60 doors

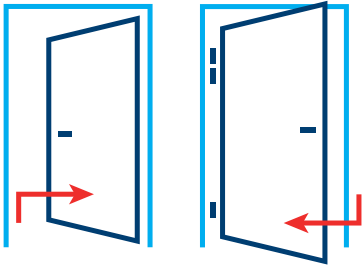
\*\* 90Z - size available only for COMFORT 60 and PREMIUM 60 doors

\*\*\* for FR (fire resistant) metal doors

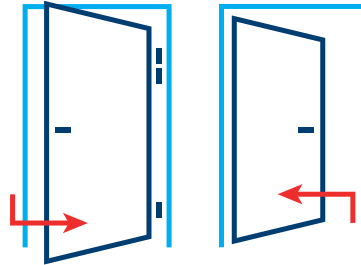
1 - dimensions of metal doors

2 - dimensions of panel doors

## DOOR OPENING DIRECTIONS



LEFT

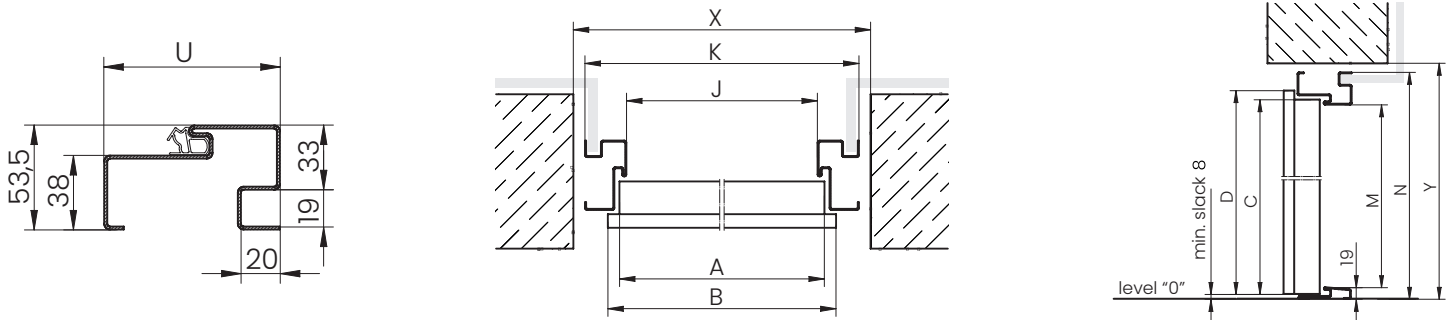


RIGHT

## STAR 60, PREMIUM 60, COMFORT 60 DOORS TECHNICAL DRAWINGS WKO MOUNTING SYSTEM (ANCHOR+BRACKET)

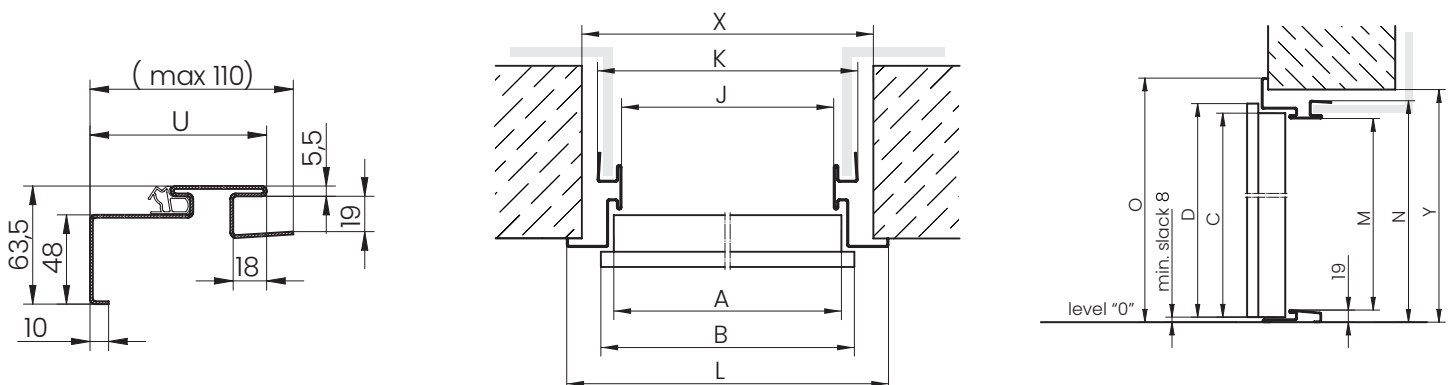
### FA PORTAL

ASYMMETRICAL DOOR FRAME WITH GROOVE AND SEAL



### FT PORTAL

CORNER DOOR FRAME WITH GROOVE AND SEAL



# DOOR AND FRAME DIMENSIONS



## ADDITIONAL INFORMATION FOR ASSEMBLY

### STAR 60, PREMIUM 60, COMFORT 60 DOOR FRAME DIMENSIONS MOUNTING SYSTEM DPO (FRAME DOWEL JOINT)

	FDH3 FDH4 SYMMETRICAL DOOR FRAME WITHOUT SEAL						ASSEMBLY HOLE	
SIZE	J	K	L	M	N	O	X	Y
<b>80N</b>	764	860	-	2005	2072* 2078**	-	890	2085* 2091**
<b>80</b>	794	890	-			-	920	
<b>90N</b>	864	960	-			-	990	
<b>90Z</b>	927	1023	-			-	1053	
<b>100E</b>	1007	1103	-			-	1133	

\* **FDH3** DOOR FRAME for thresholds: norwegian wooden height 28 mm, 19 mm and metal height 19 mm

\*\* **FDH4** DOOR FRAME for thresholds: norwegian wooden height 35 mm and metal height 32 mm

	FNK1 FNK2 CORNER DOOR FRAME WITHOUT SEAL						ASSEMBLY HOLE	
SIZE	J	K	L	M	N	O	X	Y
<b>80N</b>	764	798	872	2005	2041* 2047**	2078* 2084**	829	2056* 2061**
<b>80</b>	794	828	902				859	
<b>90N</b>	864	898	972				929	
<b>90Z</b>	927	961	1035				992	
<b>100E</b>	1007	1041	1115				1072	

\* **FNK1** DOOR FRAME for thresholds: norwegian wooden height 28 mm, 19 mm and metal height 19 mm

\*\* **FNK2** DOOR FRAME for thresholds: norwegian wooden height 35 mm and metal height 32 mm

	FAP5 FAP6 FAP7 FAP FAP9 FAQ1 FAQ2 FAQ3 ASYMMETRICAL DOOR FRAME WITH SEAL						ASSEMBLY HOLE	
SIZE	J	K	L	M	N	O	X	Y
<b>80N</b>	765	861	-	2005	2072* 2078**	-	890	2085* 2091**
<b>80</b>	795	891	-				920	
<b>90N</b>	865	961	-				990	
<b>90E***</b>	908	1004	-				1033	
<b>90Z</b>	928	1024	-				1053	
<b>100E</b>	1008	1104	-				1133	

\* **FAP5, FAP6, FAP7, FAP8** DOOR FRAME for thresholds: norwegian wooden height 28 mm, 19 mm and metal height 19 mm

\*\* **FAP9, FAQ1, FAQ2, FAQ3** DOOR FRAME for thresholds: norwegian wooden height 35 mm and metal height 32 mm

\*\*\* size available for STAR 60 doors

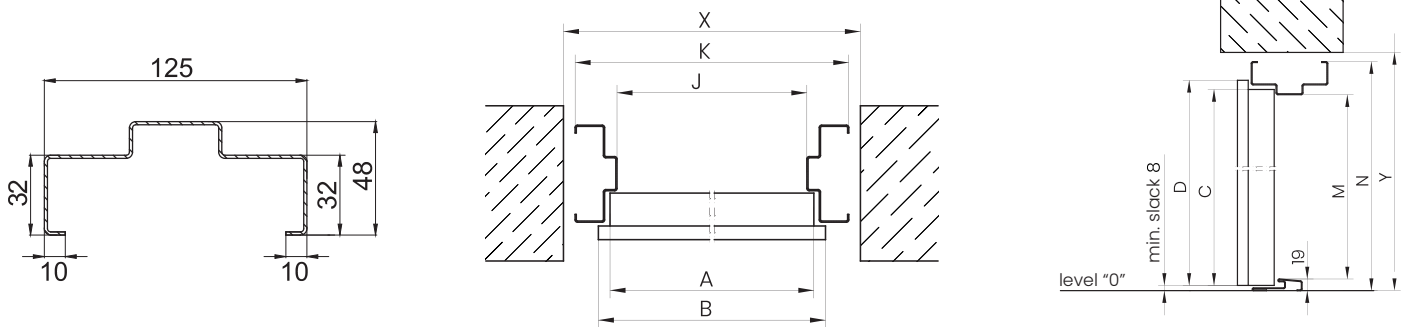


STAR 60, PREMIUM 60, COMFORT 60 DOORS TECHNICAL DRAWINGS  
MOUNTING SYSTEM DPO (FRAME DOWEL JOINT)

**FDH3**

**FDH4**

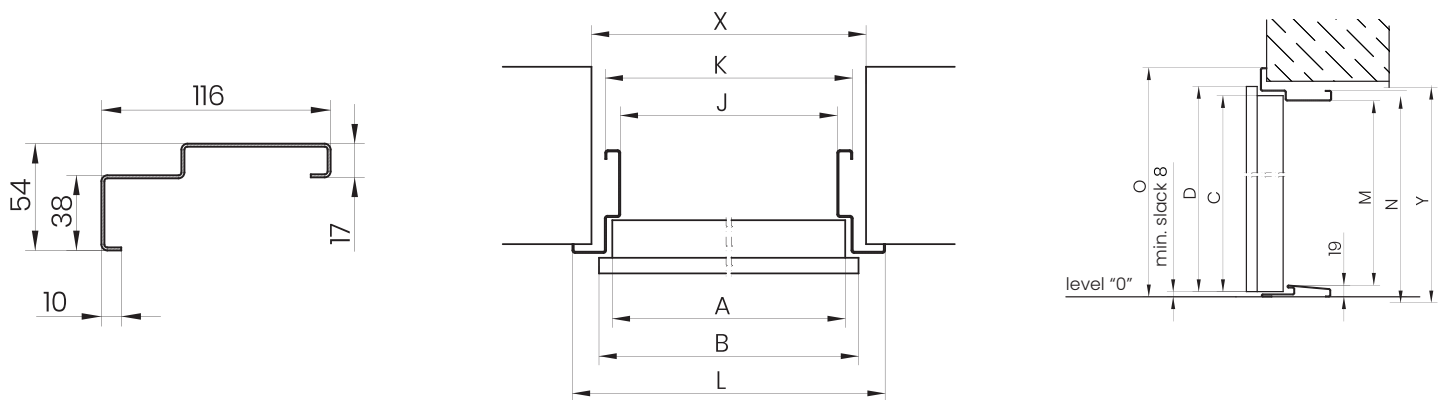
SYMMETRICAL DOOR FRAME WITHOUT SEAL



**FNK1**

**FNK2**

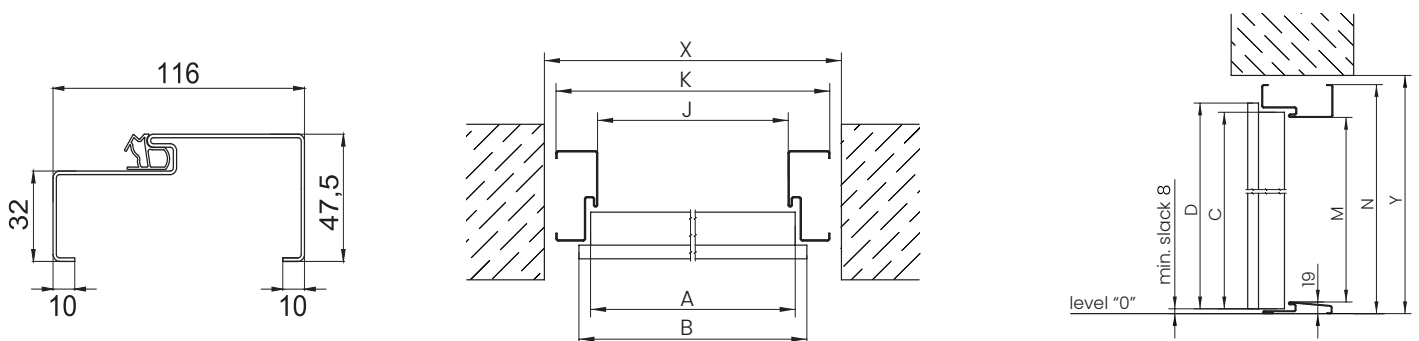
CORNER DOOR FRAME WITHOUT SEAL



**FAP5 FAP6 FAP7 FAP8 FAP9**

**FAQ1 FAQ2 FAQ3**

ASYMMETRICAL DOOR FRAME WITH SEAL



# DOOR AND FRAME DIMENSIONS



## ADDITIONAL INFORMATION FOR ASSEMBLY

### STAR 60, PREMIUM 60, COMFORT 60 DOOR FRAME DIMENSIONS MOUNTING SYSTEM DPO (FRAME DOWEL JOINT)

SIZE	FTO5 FTO6 FTO7 FTO8 FTO9 FTP1 FTP2 FTP3 CORNER DOOR FRAME WITH SEAL						ASSEMBLY HOLE	
	J	K	L	M	N	O	X	Y
80N	765	799	872	2005	2041* 2047**	2078	829	2056* 2061**
80	795	829	902				859	
90N	865	899	972				929	
90E***	908	942	1015				972	
90Z	928	962	1035				992	
100E	1008	1042	1115				1072	

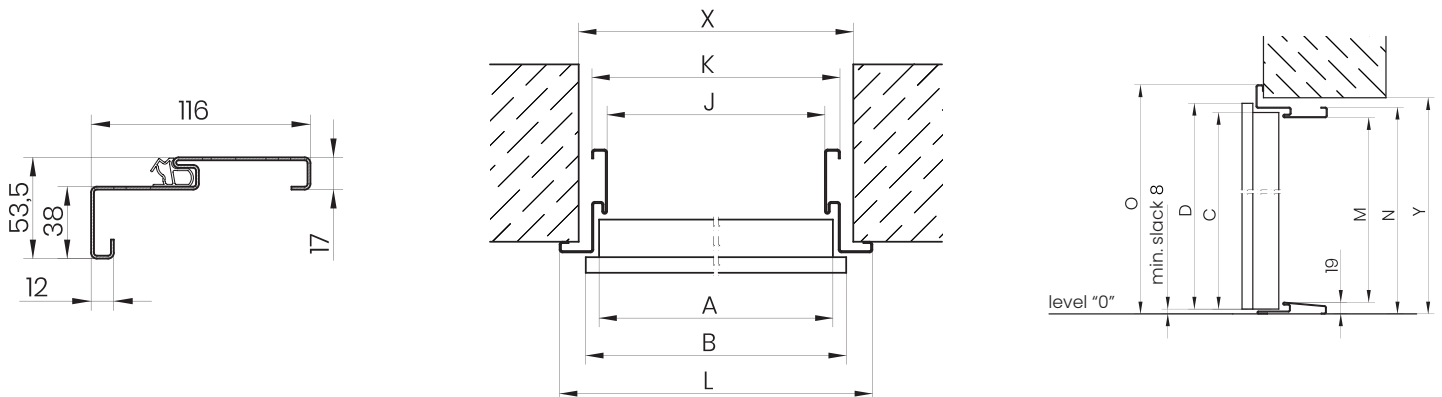
\* **FTO5, FTO6, FTO7, FTO8** DOOR FRAME for thresholds: norwegian wooden height 28 mm, 19 mm and metal height 19 mm

\*\* **FTO9, FTP1, FTP2, FTP3** DOOR FRAME for thresholds: norwegian wooden height 35 mm and metal height 32 mm

\*\*\* size available for STAR 60 doors

### STAR 60, PREMIUM 60, COMFORT 60 DOORS TECHNICAL DRAWINGS MOUNTING SYSTEM DPO (FRAME DOWEL JOINT)

#### FTO5 FTO6 FTO7 FTO8 FTO9 FTP1 FTP2 FTP3 CORNER DOOR FRAME WITH SEAL



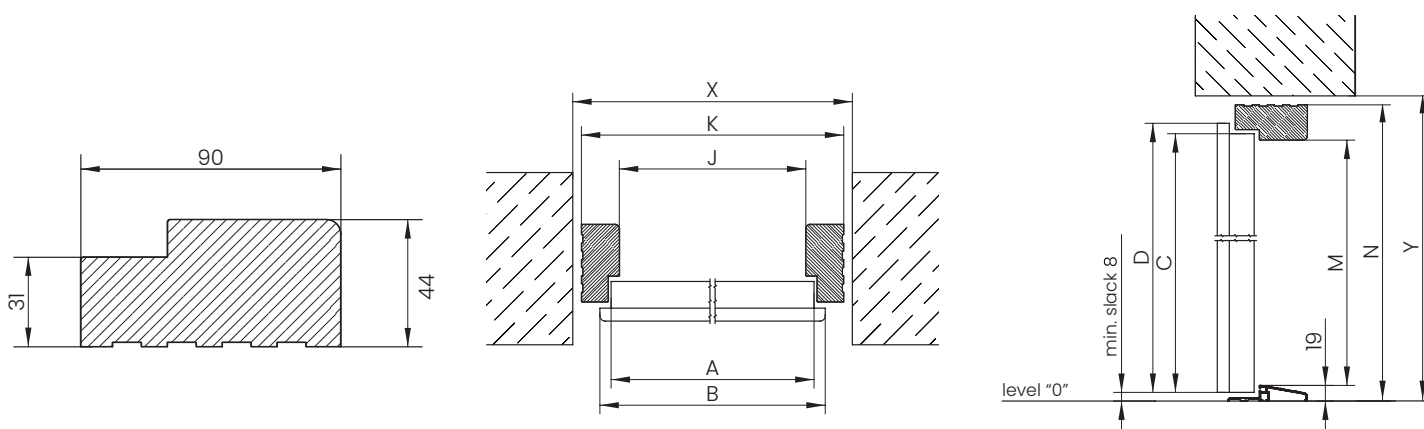
## ENJOY DOOR LEAF DIMENSIONS

SIZE	DOOR LEAF DIMENSIONS			
	A	B	C	D
80	816	844	2025	2040
90	916	944		

## ENJOY DOOR FRAME DIMENSIONS

SIZE	FA WOODEN ASYMMETRICAL DOOR FRAME WITH SEAL				ASSEMBLY HOLE	
	J	K	M	N	X	Y
80	800	887	2005	2070	907	2085
90	900	987			1007	

## ENJOY DOOR TECHNICAL DRAWINGS



**ALL AVAILABLE DOOR FRAMES FOR APARTMENTS ARE INCLUDED IN THE CATALOGUE OF DOOR FRAMES IN THE GEOS SYSTEM**

# INSPIRATIONS HIDDEN IN THE CREATIONS

# GERDA®

OUR DOORS MOUNTED IN POLISH APARTMENTS

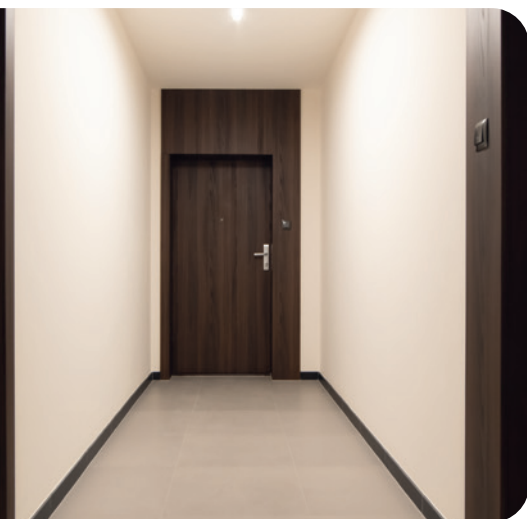




# GERDA®

## INSPIRATIONS HIDDEN IN THE CREATIONS

OUR DOORS MOUNTED IN POLISH APARTMENTS



# INSPIRATIONS HIDDEN IN THE CREATIONS

# GERDA®







**Gerda Sp. z o.o.**

Sokołów, ul. Sokołowska 49

05-806 Komorów

Poland

Phone: (+48) 22 329 10 30

e-mail: [export@gerda.pl](mailto:export@gerda.pl)

[www.gerda.pl](http://www.gerda.pl)

This product catalogue does not constitute an offer within the meaning of law and is for information purposes only.

Gerda, aiming to improve the quality of its products and services, reserves (without prior notice) the right to make changes to products which, due to the process of preparing printed materials, may not be included in this material.

Despite efforts to carefully control the information presented, factual or printing errors may occur.

The colours presented in the catalogue may differ from the original due to a different colour reproduction technique in the printing process.

The owner of copyrights of this catalogue and Gerda logos and graphic elements is Gerda Sp. z o.o.

It is forbidden to copy and distribute any content and materials without the prior consent of Gerda Sp. z o.o.